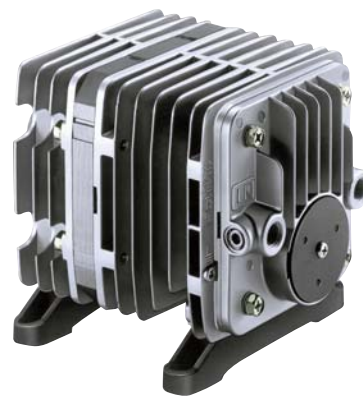


LINEAR

VP0940

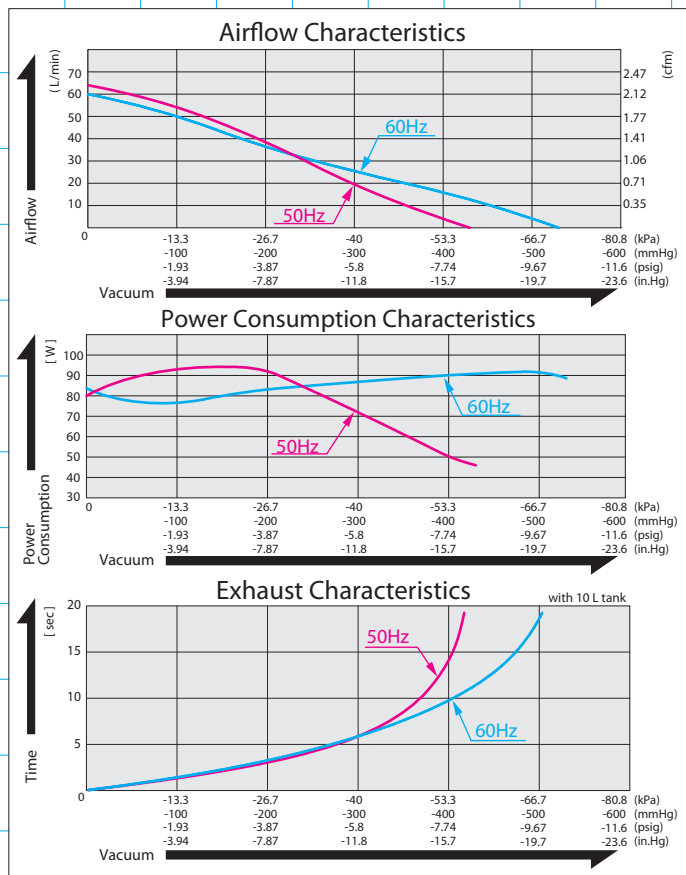


MOTOR FREE
PISTON SYSTEM



Airflow & Power Consumption

Specifications



| | (SI) | (EURO) | (U.S.A.) |
|---------------------------------|----------------------------|-------------------|-------------|
| Attainable Vacuum ^{※1} | -53.3 kPa (-400 mmHg) | -533 mbar | -15.7 in.Hg |
| Free Air Displacement | 60 L/min | | 2.12 cfm |
| Rated Voltage | 120 V AC or 230 V AC | | |
| Power Consumption | 95 W | | |
| Rated Frequency | 60 Hz & 50 Hz | | |
| Life Expectancy | 10,000 hours | | |
| Inlet | ISO Rc 1/4 | | |
| Outlet | ISO Rc 1/4 | | |
| Duty Cycle | Continuous | | |
| Coil Insulation Class | B or its equivalent (JETL) | | |
| Mounting Dimensions | 102 (L) x 130 (W) mm | 4"(L) x 5-1/8"(W) | |
| Gross Weight | 4.55 kg | 10.0 Lbs. | |
| Leadwire Length | 300 mm | 11-13/16" | |

^{※1}: Operations at higher than -53.3kPa need an additional leak valve or relief valve on the inlet piping. Please read the page of "How to Use This Catalog" first for correct use of compressors and pumps.

Application Examples



Drafter Sheet Suction



Metal Powder Recycling

Sketch Drawing and Mounting Dimensions Diagram (mm)

