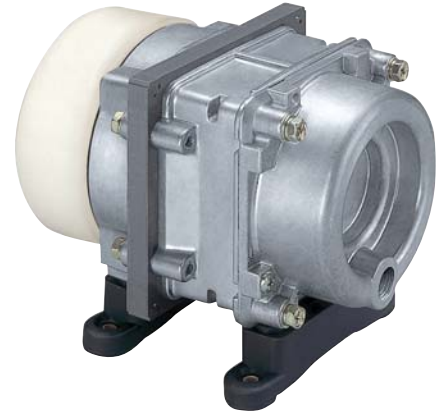


# LINEAR

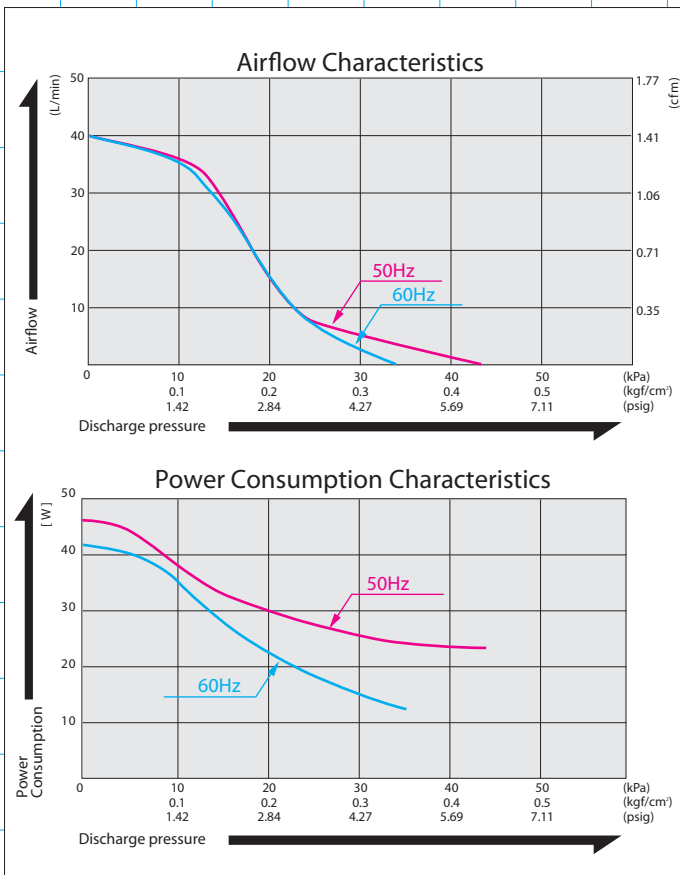


MOTOR FREE  
PISTON SYSTEM



# AC0401A

## Airflow & Power Consumption

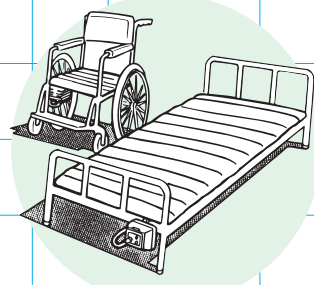


## Specifications

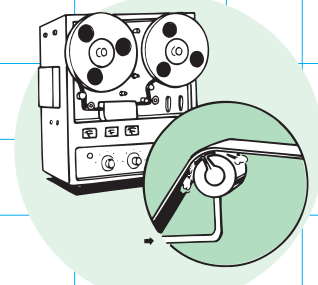
	(SI)	(EURO)	(U.S.A.)
Rated Pressure	10 kPa (0.1 kgf/cm <sup>2</sup> )	0.1 bar	1.45 psig
Rated Airflow	35 L/min		
Rated Voltage	120 V AC or 230 V AC		
Maximum Pressure	35 kPa (0.35 kgf/cm <sup>2</sup> )	0.35 bar	5.07 psig
Power Consumption	35 W or 38 W		
Rated Frequency	60 Hz or 50 Hz		
Life Expectancy	10,000 hours		
Outlet	ISO Rc 1/4		
Duty Cycle	Continuous		
Coil Insulation Class	E or its equivalent (JETL) or B for UL		
Mounting Dimensions	68 (L) x 84 (W) mm	2 <sup>-11</sup> / <sub>16</sub> "(L) x 3 <sup>-5</sup> / <sub>16</sub> "(W)	
Gross Weight	1.9 kg	4.2 Lbs.	
Leadwire Length	200 mm	7-7/8"	

Please read the page of "How to Use This Catalog" first for correct use of compressors and pumps.

## Application Examples



Bed Sore Prevention Mattress



Air Bearing

## Sketch Drawing and Mounting Dimensions Diagram (mm)

