

COMPRESSOR

# LINEAR

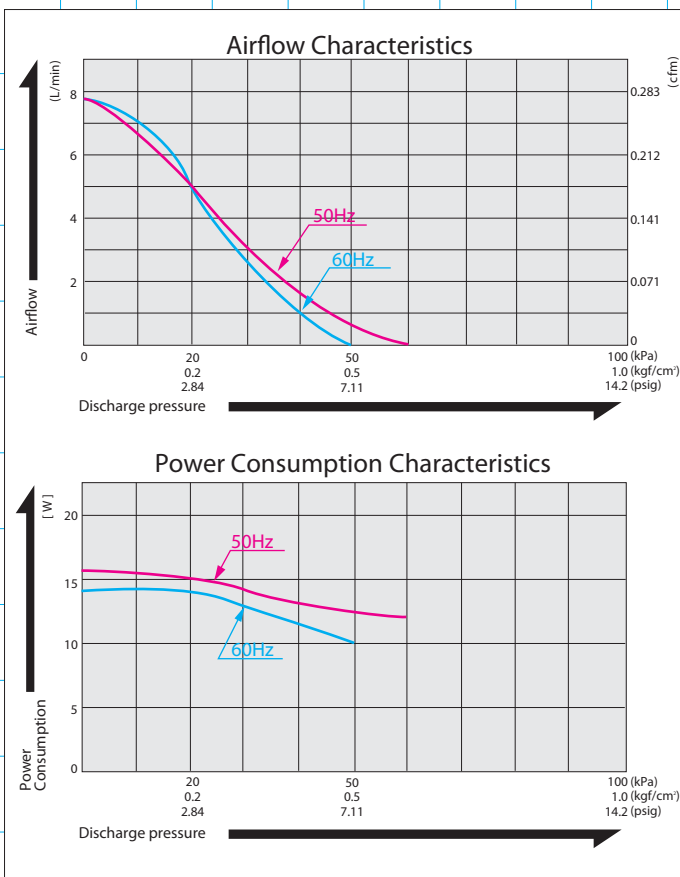
# AC0102



MOTOR FREE  
PISTON SYSTEM



### Airflow & Power Consumption



### Specifications

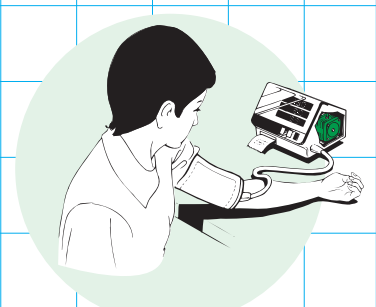
	(SI)	(EURO)	(U.S.A.)
Rated Pressure	20 kPa {0.2 kgf/cm <sup>2</sup> }	0.2 bar	2.9 psig
Rated Airflow	5 L/min		0.177 cfm
Rated Voltage	115 V AC or 230 V AC		
Maximum Pressure	40 kPa {0.4 kgf/cm <sup>2</sup> }	0.4 bar	5.8 psig
Power Consumption	14 W or 15 W		
Rated Frequency	60 Hz or 50 Hz		
Life Expectancy	10,000 psig		
Outlet	6 mm O.D. hose nipple		
Duty Cycle	Continuous		
Coil Insulation Class	E or its equivalent (JETL) and B for UL		
Mounting Dimensions	48 (L) x 62 (W) mm	1-7/8"(L) x 2-7/16"(W)	
Gross Weight	0.7 kg	1.54 Lbs.	
Leadwire Length	200 mm	7-7/8"	

Please read the page of "How to Use This Catalog" first for correct use of compressors and pumps.

### Application Examples



Endoscope



Blood Pressure Tester

### Sketch Drawing and Mounting Dimensions Diagram (mm)

