

G870 MEDICAL OXYGEN GAS SERIES



PATENTED

FasTest's **MediMate** 870 is a yoke style connector used for medical oxygen applications. **MediMate** is simple to use with a no twist, no turn approach to filling. Simply connect our product onto your valve and lock into place with a forward movement of the actuator lever and you are ready to fill the cylinder in seconds. The aluminum body and stainless seal actuator piston maximize product performance and service life. Each **MediMate** is supplied with a straight-flow 180 degree termination port and FDA grade Viton elastomer seals. The elastomer compound used is based upon industry approval and performance characteristics for the application.

- Aluminum body. Delrin actuator lever & Stainless Steel actuator piston
- Brass wetted components
- FDA grade Viton elastomer seals
- Cleaned for oxygen service



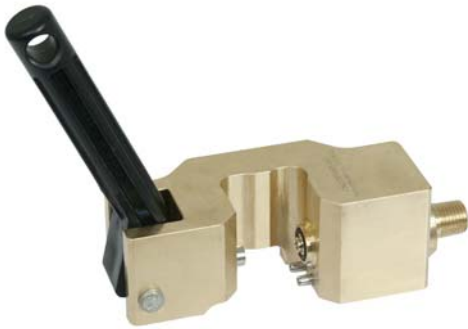
Product Family	Connection Type	Connection Method	Application
G-Series	Pin-Index	Bail Handle	Medical Oxygen
Connects To	Pressure Rating (psi)	Termination	Weight
CGA 870	3600	1/4" NPT (Male)	18.4 ounces

Part Number	Handle	Housing	Seals	Replacement Seals
G870-041A	Lever	Aluminum	Viton	SG870

For EPDM seals add "E" to the part number. Example: G870-041A-E

Additional configurations available, consult part number key or contact **FasTest**.

G870 MEDICAL OXYGEN GAS SERIES



PATENTED

FasTest's **MediMate** 870 is a yoke style connector used for medical oxygen applications. **MediMate** is simple to use with a no twist, no turn approach to filling. Simply connect onto your CGA 870 valve and lock into place with a forward movement of the actuator lever and you are ready to fill the cylinder in seconds. The machined brass body and stainless seal actuator piston maximize product performance and service life. Each **MediMate** is supplied with a straight-flow 180 degree termination port and FDA grade Viton elastomer seals. The elastomer compound used is based upon industry approval and performance characteristics for the application.

- Machined brass body. Delrin actuator lever & Stainless Steel actuator piston
- Brass wetted components
- FDA grade Viton elastomer seals
- Cleaned for oxygen service
- Auto ignition tested



Product Family	Connection Type	Connection Method	Application
G-Series	Pin-Index	Lever	Medical Oxygen
Connects To	Pressure Rating (psi)	Termination	Weight
CGA 870	3600	1/4" NPT (Male)	41.6 ounces

Part Number	Handle	Housing	Seals	Replacement Seals
G870-041CB	Lever	Brass	Viton	SG870

For EPDM seals add "E" to the part number. Example: G870-041CB-E

Additional configurations available, consult part number key or contact **FastTest**.