

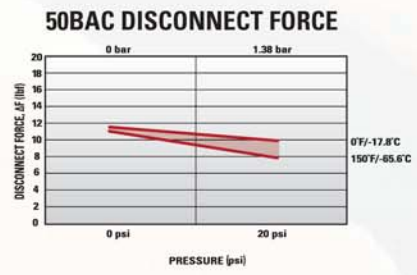
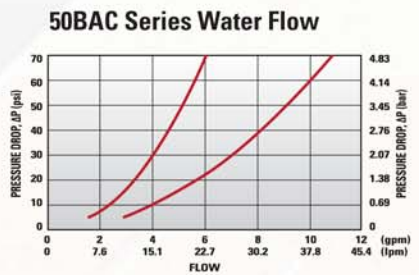
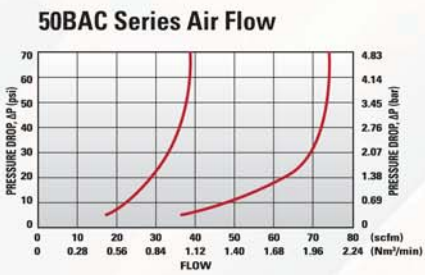
Tubing Size 1/4" - 3/8"  
1/4" Flow Acetal (POM)

# 50BAC Series Breakaway Couplings

LinkTech's patented breakaway connectors improve safety by allowing users to make a fast and leakfree disconnect with a simple pull of the coupling. The 50BAC Series couplings utilize a new patented design that facilitates two methods of disconnects. These innovative couplings are designed to disconnect when pull force is applied to the coupling or the user can simply depress the thumb-latch. LinkTech's unique 50BAC couplings interconnect with all standard 50AC and 50GP Plugs allowing for reverse field compatibility.



<p><b>Performance Ratings:</b></p> <ul style="list-style-type: none"> <li>Operating Pressure: 0psi to 20psi</li> <li>Temperature: 0°F to 180°F; (-18°C to 82°C)</li> <li>Flow Capacity: 1/4" Size</li> </ul>	<p><b>Materials &amp; Construction:</b></p> <ul style="list-style-type: none"> <li>Bodies &amp; Terminations: Acetal (POM)</li> <li>Internal Valves: Acetal (POM)</li> <li>Internal Valve Springs: 316 Stainless Steel</li> <li>O-rings: FDA &amp; NSF Grade Buna-N (others available)</li> <li>Thumb-latch: Acetal (POM)</li> </ul>
--	--



**FLOW RATES**

The data below shows liquid flow rates for LinkTech couplings. Each coupling combination was tested at 70°F (21°C).

**C<sub>v</sub> Values for 50BAC Series Couplings**

SOCKETS	50ACV-PB2-04	50AC-PB2-04	50ACV-PB2-06	50AC-PB2-06	50ACV-PB9-04	50AC-PB9-04	50ACV-PB9-06	50AC-PB9-06	50ACV-PB1-04	50AC-PB1-04	50ACV-PB1-06	50AC-PB1-06
50BACV-SB2-04	0.42	0.58	0.45	0.78	0.31	0.38	0.45	0.6	0.43	0.79	0.45	0.75
50BAC-S2-04	0.52	0.95	0.7	1	0.38	0.39	0.55	0.87	0.65	0.95	0.65	1
50BACV-SB2-06	0.43	0.63	0.5	0.89	0.33	0.39	0.62	0.5	0.45	0.95	0.5	0.92
50BAC-S2-06	0.53	0.95	0.8	1.4	0.38	0.39	0.57	1	0.7	1.4	0.73	1.4
50BACV-SB3-04	0.42	0.58	0.45	0.78	0.31	0.38	0.45	0.6	0.43	0.79	0.45	0.75
50BAC-S3-04	0.52	0.95	0.7	1	0.38	0.39	0.55	0.87	0.65	0.95	0.65	1
50BACV-SB3-06	0.43	0.63	0.5	0.89	0.33	0.39	0.62	0.5	0.45	0.95	0.5	0.92
50BAC-S3-06	0.53	0.95	0.8	1.4	0.38	0.39	0.57	1	0.7	1.4	0.73	1.4
50BACV-SB1-04	0.41	0.65	0.5	0.81	0.31	0.35	0.48	0.74	0.45	0.8	0.45	0.8
50BAC-S1-04	0.56	0.84	0.83	1.4	0.35	0.4	0.58	1.04	0.75	1.4	0.78	1.4
50BACV-SB1-06	0.43	0.7	0.5	1.03	0.3	0.36	0.7	0.48	0.45	0.97	0.48	1
50BAC-S1-06	0.57	0.84	0.82	1.4	0.35	0.4	0.6	1.05	0.75	1.4	0.75	1.4

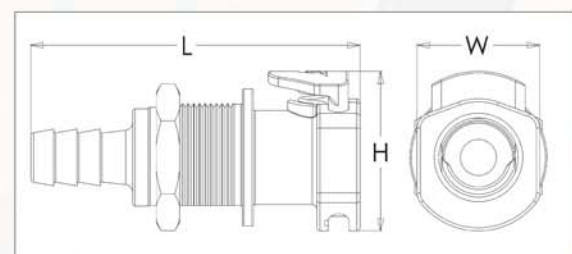
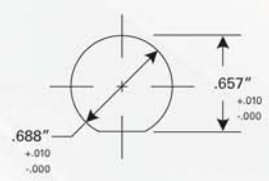
Specific coupling combination flow rates can be determined by using this formula:

$$Q = C_v \sqrt{\frac{\Delta P}{S}}$$

Q = Flow rate in gallons per minute  
 C<sub>v</sub> = Average flow rates (see chart)  
 ΔP = Pressure drop across coupling (psi)  
 S = Specific gravity of liquid.

	PANEL OPENING	MAX PANEL THICKNESS	MIN PANEL THICKNESS
SOCKETS	See Drawing	0.5"	0.05"
PLUGS	0.688"	0.3"	0.05"

PANEL NUT HEX SIZE	PANEL NUT THREAD
13/16"	11/16" - 24 UNS




Reference Dimensions: L = Length, W = Width, H = Height

# 50BAC Series Breakaway Sockets

Tubing Size 1/4" - 3/8"  
1/4" Flow Acetal (POM)

		<b>MALE THREAD SOCKET</b>					
Non-Valved	Valved	Thread Size	Length	Width	Height		
50BAC-S1-04	50BACV-SB1-04	1/4" NPT	1.40"	.75"	.94"		
50BAC-S1-06	50BACV-SB1-06	3/8" NPT	1.40"	.75"	.94"		

		<b>IN-LINE HOSE BARB SOCKET, SHORT BODY</b>					
Non-Valved	Tube Size	Metric Tube	Length	Width	Height		
50BAC-S2-04	1/4" ID	6.4mm ID	1.35"	.75"	.94"		
50BAC-S2-06	3/8" ID	9.5mm ID	1.35"	.75"	.94"		

		<b>IN-LINE HOSE BARB SOCKET, LONG BODY</b>						
Non-Valved	Valved	Tube Size	Metric Tube	Length	Width	Height		
50BAC-S2-04LB	50BACV-SB2-04	1/4" ID	6.4mm ID	2.02"	.75"	.94"		
50BAC-S2-05LB	50BACV-SB2-05	5/16" ID	7.9mm ID	2.02"	.75"	.94"		
50BAC-S2-06LB	50BACV-SB2-06	3/8" ID	9.5mm ID	2.02"	.75"	.94"		

		<b>IN-LINE PTF SOCKET, LONG BODY</b>						
Non-Valved	Valved	Tube Size	Metric Tube	Length	Width	Height		
50BAC-S9-04LB	50BACV-SB9-04	1/4" OD, .17" ID	6.4mm OD, 4.3mm ID	1.95"	.75"	.93"		
50BAC-S9-06LB	50BACV-SB9-06	3/8" OD, .25" ID	9.5mm OD, 6.4mm ID	2.05"	.75"	.93"		

		<b>PANEL MOUNT HOSE BARB SOCKET (GASKET SOLD SEPARATELY)</b>						
Non-Valved	Valved	Tube Size	Metric Tube	Length	Width	Height		
50BAC-S3-04	50BACV-SB3-04	1/4" ID	6.4mm ID	2.10"	.90"	1.05"		
50BAC-S3-05	50BACV-SB3-05	5/16" ID	7.9mm ID	2.10"	.90"	1.05"		
50BAC-S3-06	50BACV-SB3-06	3/8" ID	9.5mm ID	2.10"	.90"	1.05"		

		<b>PANEL MOUNT PTF SOCKET (GASKET SOLD SEPARATELY)</b>						
Non-Valved	Valved	Tube Size	Metric Tube	Length	Width	Height		
50BAC-S8-04	50BACV-SB8-04	1/4" OD, .17" ID	6.4mm OD, 4.3mm ID	1.97"	.90"	1.05"		
50BAC-S8-06	50BACV-SB8-06	3/8" OD, .25" ID	9.5mm OD, 6.4mm ID	2.10"	.90"	1.05"		

		<b>PANEL MOUNT SOCKET SEALING GASKET</b>			
Part No.	Material	Diameter	Thickness		
C11027	Buna-N	0.88" OD	0.050"		
C11073	EPDM	0.88" OD	0.050"		