

## “60 and HPB Series” - Sleeve Actuated Connectors

### Technology Overviews

The **60 Series** connectors have a sliding sleeve and threaded collet design for instantly sealed connections to 750 psi. The design incorporates an internal piston that seals the mating part and enhances the seal as pressure increases. Connections are made with a simple push and snap motion.

The internal sealing piston provides a straight through flow for minimal restriction and pressure loss. Standard products are manufactured in stainless steel with Buna N seals. Other seal materials and custom designs are available for all your applications.

The **HPB Series** connectors have a sliding sleeve and threaded collet design for instantly sealed connections to 5000 psi. The design is the ideal and preferred method for fast, safe and repeatable connections to NPT, “AN” SAE 37° flare and SAE 45° flare profile male threads. Additional models are available for compression fittings custom thread applications.

Simply push the connector on to the male threads to connect and pull sleeve away from connection to release. Standard products are manufactured in stainless steel with Buna N seals. Other seal materials and custom designs are available for all your applications.

### Features and Benefits

#### “60 Series”

- Compatible to NPT, SAE 37° “AN” flare and SAE 45° flare male threads
- Instant connections from vacuum to 750 psi eliminate tape, sealant, wrenches and thread damage
- High flow design for short filling and testing times
- Rugged stainless steel housing
- -40°F to +250°F operating temperature



For External Threads

#### “HPB Series”

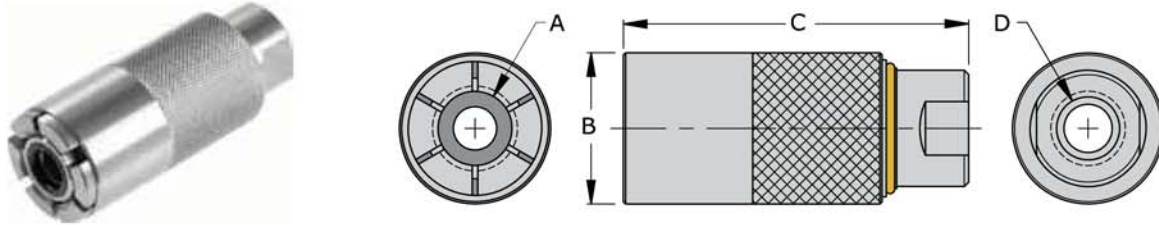
- Compatible to NPT, “AN” SAE 37° flare and SAE 45° flare male threads
- Instant connections from vacuum to 5000 psi eliminate tape, sealant, wrenches and thread damage
- Safety feature will not allow disconnect under pressure
- Split collet design locks securely
- Easy to replace main seal



For External Threads

## “60 and HPB Series” - Sleeve Actuated Connectors

### FasTest “60 Series” - Connectors for External Threads



#### “60 Series” Sleeve Actuated for NPT Threads (per SAE J476)

Part Number	Dim A	Dim B	Dim C	Dim D	Rated PSI	Housing Material	Seal Material	Main Seals Package (5)
60G-1T02	1/8" NPT	0.99"	2.95"	1/8" NPT	Vacuum to 750	Stainless Steel	Buna N	S1105-B70
60G-1T04	1/4" NPT	1.19"		1/4" NPT				S1109-B70
60G-1T06	3/8" NPT	1.38"	3/8" NPT	S1111-B70				
60G-1T08	1/2" NPT			S1112-B70				
60G-1T12	3/4" NPT	1.58"	1/2" NPT	Consult Factory				
60G-1T16	1" NPT	1.97"	3/4" NPT					

#### “60 Series” Sleeve Actuated for “AN” SAE 37° Flare Threads (per SAE J514)

Part Number	Dim A	Dim B	Dim C	Dim D	Rated PSI	Housing Material	Seal Material	Main Seals Package (5)
60G-049	-4 (7/16-20)	0.99"	2.95"	1/8" NPT	Vacuum to 750	Stainless Steel	Buna N	S1010-B70
60G-069	-6 (9/16-18)	1.19"		1/4" NPT				S1012-B70
60G-089	-8 (3/4-16)	1.58"	3.15"	1/2" NPT				S1014-B70
60G-109	-10 (7/8-14)	1.78"	3.54"	3/4" NPT				S1016-B70
60G-129	-12 (1 1/16-12)							Consult Factory
60G-169	-16 (1 5/15-12)	1.97"	3.54"	3/4" NPT				S1120-B70

#### “60 Series” Sleeve Actuated for SAE 45° Flare Threads (per SAE J512/513)

Part Number	Dim A	Dim B	Dim C	Dim D	Rated PSI	Housing Material	Seal Material	Main Seals Package (5)
60G-A04	-4 (7/16-20)	0.99"	2.95"	1/8" NPT	Vacuum to 750	Stainless Steel	Buna N	S2060-0246B70
60G-A06	-6 (5/8-18)	1.38"	3.15"	3/8" NPT				S1012-B70
60G-A08	-8 (3/4-16)							S1015-B70
60G-A10	-10 (7/8-14)	1.78"	3.54"	3/4" NPT				S1015-B70
60G-A12	-12 (1 1/16-14)							S1117-B70
60G-A14	-14 (1 1/4-12)	1.97"	3.54"	3/4" NPT				Consult Factory
60G-A16	-16 (1 3/8-12)							

#### Notes:

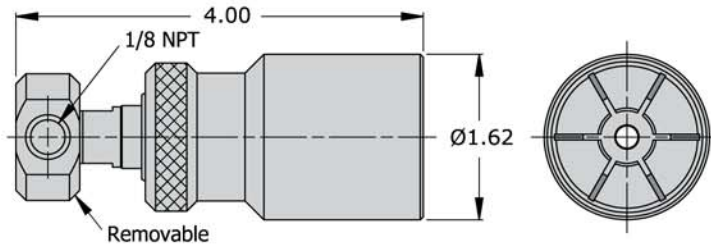
Additional sizes available for 60 Series connectors. Consult factory for details.

Optional seal materials available are FKM (Viton) and EPDM.

Examples: 60G-xxxV = FKM (Viton)    60G-xxxE = EPDM

## “60 and HPB Series” - Sleeve Actuated Connectors

### FasTest “HPB Series” - Connectors for External Threads / Compression Fittings



#### “HPB Series” Sleeve Actuated for NPT Threads (per SAE J476)

Part Number	Connects to	Termination Port	Rated PSI	Housing Material	Seal Material	Repair Kit	Main Seals Package (5)
HPB-041021	1/4" NPT	1/8" NPT	Vacuum to 5000	Stainless Steel	Buna N	HPBR	S1008-B70
HPB-061021	3/8" NPT						S1011-B70
HPB-081021	1/2" NPT						S1013-B70

#### “HPB Series” Sleeve Actuated for “AN” SAE 37° Flare Threads (per SAE J514)

Part Number	Connects to	Termination Port	Rated PSI	Housing Material	Seal Material	Repair Kit	Main Seals Package (5)
HPB-049021	- 4 (7/16-20)	1/8" NPT	Vacuum to 5000	Stainless Steel	Buna N	HPBR	S2070-0270B70
HPB-069021	- 6 (9/16-18)						S1012-B70
HPB-089021	- 8 (3/4-16)						S1015-B70

#### For Compression Fittings - Swagelok® or Equivalent

Part Number	Connects to	Termination Port	Rated PSI	Housing Material	Seal Material	Repair Kit	Main Seals Package (5)
HPB-CF04021	1/4" (7/16-20)	1/8" NPT	Vacuum to 5000	Stainless Steel	Buna N	HPBR	S1008-B70
HPB-CF06021	3/8" (9/16-20)						S1011-B70
HPB-CF08021	1/2" (3/4-20)						S1013-B70

#### For Compression Fittings - Ferulok® or Equivalent

Part Number	Connects to	Termination Port	Rated PSI	Housing Material	Seal Material	Repair Kit	Main Seals Package (5)
HPB-CF04021F	1/4" (7/16-20)	1/8" NPT	Vacuum to 5000	Stainless Steel	Buna N	HPBR	S1008-B70
HPB-CF06021F	3/8" (9/16-18)						S1011-B70
HPB-CF08021F	1/2" (3/4-16)						S1013-B70

**Notes:**

Optional seal materials available are FKM (Viton) and EPDM.

Examples: HPB-xxx021V = FKM (Viton)    HPB-xxx021E = EPDM

60 - HPB