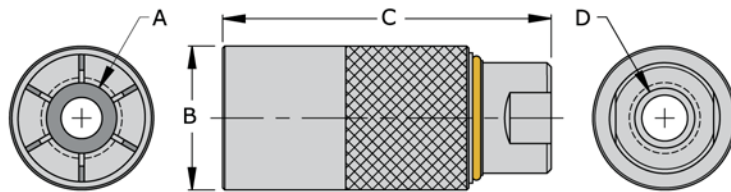


## FasCal - Sleeve Actuated Connectors - 60 Series



**FasTest** sleeve actuated **60 Series** connectors are ideal fast, safe and repeatable connections to a wide variety of thread used in process and manufacturing industries for filling, pressure and leak testing, and instrument calibration. Simply insert male threaded end into the connector and push the latching sleeve forward to complete the connection. Remove test pressure and pull back the latching sleeve to release the connection.

- Instant connections from vacuum to 750 psi
- Connect to 1/4" and 1/2" NPT, SAE 37° Flare "AN" and compression fittings
- No wrenches, sealants or thread damage
- Rugged stainless steel housing



### For Double Ferrule Compression Style Fittings - Swagelok®

Part Number	Connects to Dim "A"	Diameter Dim "B"	Length Dim "C"	Term. Thread Dim "D"	Rated PSI	Housing Material	Seal Material	Main Seals Package (5)
60G-CF04	-4 (7/16-20)	0.99"	2.95"	1/8" NPT	750	Stainless Steel	Buna N	S1008-B70

### For NPT Pipe Threads

Part Number	Connects to Dim "A"	Diameter Dim "B"	Length Dim "C"	Term. Thread Dim "D"	Rated PSI	Housing Material	Seal Material	Main Seals Package (5)
60G-1T02	1/8" NPT	0.99"	2.95"	1/8" NPT	750	Stainless Steel	Buna N	S1105-B70
60G-1T04021	1/4" NPT	1.19"	2.95"	1/8" NPT				S1109-B70
60G-1T08021	1/2" NPT	1.58"	3.15"	1/8" NPT				S1112-B70

### For "AN" 37° Flare Male Threads

Part Number	Connects to Dim "A"	Diameter Dim "B"	Length Dim "C"	Term. Thread Dim "D"	Rated PSI	Housing Material	Seal Material	Main Seals Package (5)
60G-049	-4 (7/16-20)	0.99"	2.95"	1/8" NPT	750	Stainless Steel	Buna N	S1010-B70
60G-069	-6 (9/16-18)	1.38"	3.15"	3/8" NPT				S1012-B70
60G-089	-8 (3/4-16)	1.38"	3.15"	3/8" NPT				S1014-B70

**Notes:**

Additional sizes available for 60 Series connectors. Consult factory for details.  
Optional seal materials available are FKM (Viton) and EPDM.

Examples: 60G-xxxV = FKM  
60G-xxxE = EPDM