

# Stopper Cylinder Series AST

**Bore Size:**  $\phi 50$ ,  $\phi 63$ ,  $\phi 80$

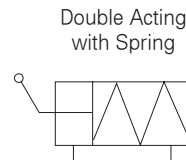
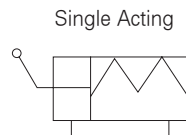
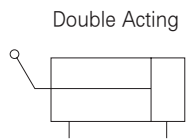


- Stopping direction can be changed every 90°
- Easy maintenance
- Three actuating options  
: Single, double acting and double acting with spring
- Auto switch capable

Specifications	
Action	Double Acting, Single Acting(Spring Extend), Double Acting with Spring
Fluid	Air
Proof Pressure	1.5MPa(213psi)
Max. Operating Pressure	1MPa(142.2psi)
Min. Operating Pressure	Double acting: 1MPa(142.2psi) Single acting: 1MPa(142.2psi)
Ambient and Fluid Temperature	-5℃ ~ 60℃ (23~140°F)
Lubrication	Not required
Cushion	Rubber bumper
Stroke Length Tolerance	+1.4 0
Mounting	Flange
Auto Switch	Attachable
Type	Roller Type, Direct Type

Standard Stroke	
Bore Size	Standard Stroke(mm)
$\phi 50$	20, 25, 30, 40
$\phi 63, \phi 80$	30, 40

< Symbol >



## How to Order

**AST** **(1)** **(2)** — **(3)** **(4)** **(5)** — **(6)** **(7)** — **(8)** **(9)**

### 1 Type

R : Roller  
D : Direct

### 2 Bore Size

50 : 50mm  
63 : 63mm  
80 : 80mm

### 3 Stroke

$\phi 50$  : 20, 25, 30, 40  
 $\phi 63$  : 30, 40  
 $\phi 80$  : 30, 40

### 4 Action

Blank : Single Acting  
D : Double Acting  
Z : Double Acting with Spring

### 5 Roller

Blank : Material(MC Nylon)  
M : Rolled steel(SPA material)

### 6 Port Location

	Location	$\phi 50$	$\phi 63,80$
Blank	Port-A:on body	N/A	○
	Port-B:on flange		
V	Port-A :on flange	○	○
	Port-B	(Standard)	

### 7 Valve

Blank : None  
1 : With Valve(100V AC)  
2 : With Valve(200V AC)  
3 : With Valve(120V AC)  
4 : With Valve(240V AC)  
5 : With Valve(24V DC)

### 8 Type of Auto Switch

Blank : Without Auto Switch  
W4 : Existing plug Point Auto Switch  
W8H/W8V: Existing Plug Point round auto switch (horizontal Type/

vertical Type)

W9H/W9V: non Plug Point round auto switch (horizontal Type/vertical Type)

### Caution)

1. According to the lead line direction of the existing plug point or non plug point auto switch, it is separated into horizontal/vertical types.
2. When the lead wire length is 3m add an L to the end number of the product.  
ex) W8H: W8HL
3. W4, W8H(V):Multiple use of DC24V, AC110V / Multiple use of W9H(V):DC24V

### 9 Auto Switch

Blank : 2pcs.  
S : 1pc.