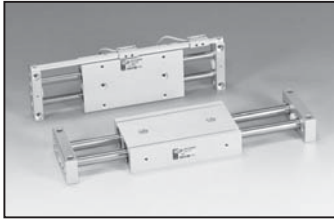


Slide Cylinder Series ASL

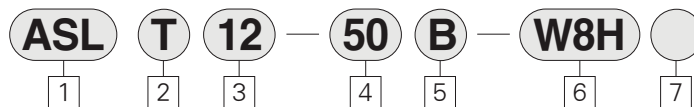
Bore Size: ϕ 12, ϕ 16, ϕ 20
 ϕ 25, ϕ 32



- High accuracy
- Auto switch adaptable
- Compact type

Specifications						
Models	ASL12	ASL16	ASL20	ASL25	ASL32	
Cylinder (mm)	2×12	2×16	2×20	2×25	2×32	
Rod (mm)	6	10	12	14	16	
Standard Stroke (mm)	25, 50, 75	25, 50, 75, 100	25, 50, 75, 100	25, 50, 75, 100, 125	25, 50, 75, 100, 125, 150	
Theoretical Force (kgf)	1.69×P	3.02×P	4.71×P	7.56×P	18.84×P	
Piping Method	M5	M5	M5	PT 1/8	PT 1/8	
Weight (kgf)	0.14 + 0.002×S.T	0.23 + 0.0035×S.T	0.5 + 0.0045×S.T	0.7 + 0.007×S.T	1.24 + 0.01×S.T	
Max. Holing Force (kgf)	TUBE PLATE	0.2 ~ 0.9 0.1 ~ 0.5	0.3 ~ 2.5 0.1 ~ 0.8	0.4 ~ 4.5 0.2 ~ 1.4	0.4 ~ 6.6 0.2 ~ 1.8	0.8 ~ 11.2 0.3 ~ 4.1
Fluid	Air		Air	Air	Air	
Operating Pressure - kgf/cm ² (psi)	1.5 ~ 10.2(21.3~145)					
Lubrication	None(Non-Lube)					
Temperature · °C(°F)	5 ~ 60°C(41~140°F)					
Speed (mm/sec)	50 ~ 300					
Acting Type	Double Acting					
Switch	W8H, W9H					
AUTO Switch	W8V, W9V					

How to Order



1 Slide Cyl.
Built in Magnet

2 Mounting
T : Housing mounting
P : Plate mounting

3 Bore size
12 : 12m 16 : 16m
20 : 20m 25 : 25m
32 : 32m

4 Port Size(PT)
 ϕ 12 : 25, 50, 75
 ϕ 16 : 25, 50, 75, 100
 ϕ 20 : 25, 50, 75, 100
 ϕ 25 : 25, 50, 75, 100, 125
 ϕ 32 : 25, 50, 75, 100, 125, 150

5 Cushion
Blank : Stopper 2EA
B : Shock Absorber 2EA
BS : Shock Absorber 1EA

6 Type of Auto Switch
Blank : Applicable without auto switch
W8H : Reed Auto Switch
W9H : Solid State Auto Switch
W8V : Reed Auto Switch
W9V : Solid State Auto Switch
W9HN : Solid State Auto Switch(3wire, NPN)
W9HP : Solid State Auto Switch(3wire, PNP)

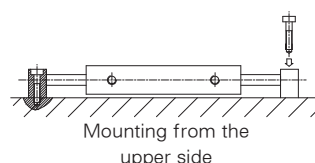
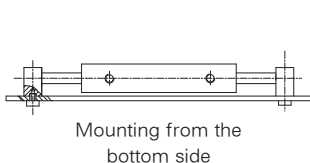
7 Number of Auto Switch
Blank : 2 pcs
S : 1 pc
N : (N) pcs

Max. Movable Weight / Non-rotating Accuracy

Models	ASL12	ASL16	ASL20	ASL25	ASL32
Max. Movable Weight	1kg	4kg	5kg	6kg	10kg
Non-rotating accuracy	±0.1°	±0.04°	±0.04°	±0.02°	±0.01°

※ Place the center of gravity of the load and center of the slide unit close during operation.

<Affixing the plate>



<Affixing the housing>

