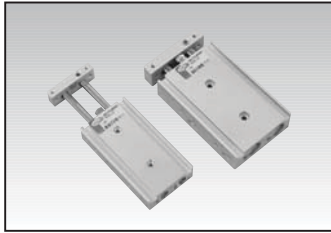
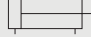
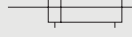


Double Rod Cylinder Series ADR

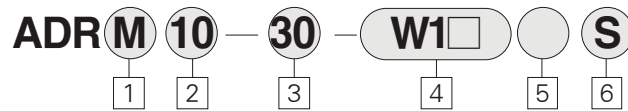
Bore Size: $\phi 10$, $\phi 16$, $\phi 20$, $\phi 25$



- High lateral load capability
- Adjustable stroke is available
- Auto switch ready
- Non-lube service standard.

Action	Series	Bore Size (mm)	Port Size	Standard Stroke (mm)	Description	Operating Pressure kgf/cm ² (psi)
Double Acting/Single Rod-Ball Bushing Bearing Type 	ADRL	$\phi 10$	M5×0.8	10, 15, 20, 25, 30, 35, 40, 45, 50, 55, 60, 65, 70, 75	Built-in Magnet Bumper Cushion	1~7.0(14~100)
		$\phi 16$		10, 15, 20, 25, 30, 35, 40, 45, 50, 55, 60, 65, 70, 75, 80, 85, 90, 95, 100		
		$\phi 20$		10, 15, 20, 25, 30, 35, 40, 45, 50, 55, 60, 65, 70, 75, 80, 85, 90, 95, 100		
		$\phi 25$		10, 15, 20, 25, 30, 35, 40, 45, 50, 55, 60, 65, 70, 75, 80, 85, 90, 95, 100		
Double Acting/Single Rod-Sliding Bearing Type 	ADRM	$\phi 10$	M5×0.8	10, 15, 20, 25, 30, 35, 40, 45, 50, 55, 60, 65, 70, 75	Built-in Magnet Bumper Cushion	1~7.0(14~100)
		$\phi 16$		10, 15, 20, 25, 30, 35, 40, 45, 50, 55, 60, 65, 70, 75, 80, 85, 90, 95, 100		
		$\phi 20$		10, 15, 20, 25, 30, 35, 40, 45, 50, 55, 60, 65, 70, 75, 80, 85, 90, 95, 100		
		$\phi 25$		10, 15, 20, 25, 30, 35, 40, 45, 50, 55, 60, 65, 70, 75, 80, 85, 90, 95, 100		

How to Order



1 Type of Bearing

- M : Slide Bearing Type
L : Ball Bushing Bearing Type

2 Bore Size

- 10 : $\phi 10$ mm
16 : $\phi 16$ mm
20 : $\phi 20$ mm
25 : $\phi 25$ mm

3 Stroke(mm)

- ※ Refer to the upside table
(For non standard stroke, inquire separately)

4 Types of Auto Switches

- Blank : Without Auto Switch
W1H : Solid State Switch (DC24V)
W13 : Reed Switch (AC110V, DC24V)

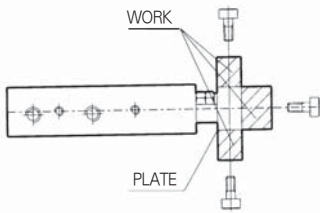
5 Lead Wire Length

- Blank : 0.5m
L : 3m

6 Number of Switches

- Blank : 2 pcs.
S : 1 pc.
: Enter Required Number of Switches.

Plate Can be Mounted From Three Faces



Standard Specifications

Action	Double Acting Double Rod
Fluid	Air
Max. Operating Pressure	10 kgf/cm ² (142 psi)
Proof Pressure	7 kgf/cm ² (100 psi)
Min. Operating Pressure	1 kgf/cm ² (14 psi)
Ambient and Fluid Temperature	-10℃~+60℃ (14~140 °F)
Piston Speed	30~300 mm/s
Cushion	Rubber Cushion
Lube	None(Non-Lube)
Stroke Adjustment Range	0~5mm
Bearing	Slide bearing, Ball Bushing Bearing (Same Dimensions)

- ACP/ UACP
- APM
- AS
- AX
- AM
- AM2
- AL/ ALX
- AQ/ UAQ
- ADQCP
- AQ2/ UADQ2
- AG/ UAG
- NGQ/ UNGQ
- AJ/ AJM
- ABK
- NSK
- GX/ AGX
- NDM**
- ADR**
- AMR/ UAMR
- NST
- AST
- ASTH
- NF
- NLCD
- NLCS
- TCRL
- NP
- ARD/ UARD
- NR
- ASL
- SB
- SAH
- CR/ CV
- CR/ CV-AQ2, ADQ2
- CR/ CV-AX
- CR/ CV-NLCD
- CR/ CV-AGL
- DR100
- RS
- DV1000/ 3000/4000
- DS300
- DS2000