



TPC ALL PRODUCTS

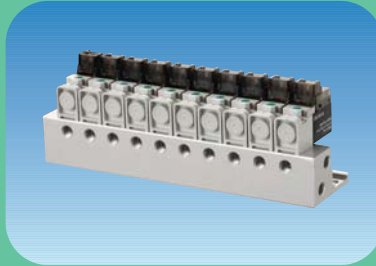
Directional Control Valves

2 Port Valve Series DW



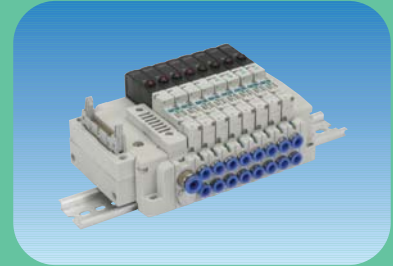
- Wide range of operating pressures
0~7kgf/cm²(0~99.5psi)
0~10kgf/cm²(0~142.2psi)
0.3~10kgf/cm²(4.26~142.2psi)
- High flow capacity
- Efficient solenoid energy

3 Port Miniature Solenoid Valve Series DR100



- Low power consumption / 0.6WDC
- Compact design
- Large flow capacity 0.17mm²(Cv0.009)

Plug-in Type 5port solenoid Valve Series RS



- 2 Mounting options available(din rail or tie-rod)
- Multiple supply blocks adaptable
- Expandable to 24 single stations
- Single, double, 3 position and dual operation
3 port 4 position options available.
- Electrical input, d-sub, flat cable connector:
for use with serial interface

5 Port pilot solenoid valve Series DV1000 · 3000 · 4000



- **Quick response time & large flow capacity**
 - * Low consumer electric power 0.6W (24VDC, 25mA)
- **High reliability**
 - * Long life
- **Product diversity**
 - * Easy wiring
 - * Nickel plated (copper free)
 - * Built-in LED for grommet type

3 · 5 port Pilot Solenoid Valve Series DS300/DS3000



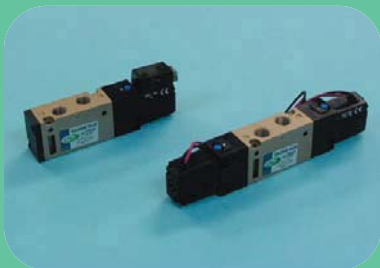
- Compact light weight design
- Large flow capacity
- Low power consumption
- Designed for non-lubricated service

3 · 5 port Air Pilot Valve Series DP300/3000/5000



- Compact size and light weight
 - 26.4mm/0.63inch width (series DP300, DP3000 / UDP300, UDP3000)
 - 32mm / 1.26inch width (series DP5000 / UDP5000)
- Large flow capacity
 - Cv. 1.0 - Rc(PT)1/4 (DP300, DP3000)
 - NPT 1/4(UDP300, UDP3000)
 - Cv. 3.2-Rc(PT) 1/2(DP5000) NPT1/2(UDP5000)

5 Port Solenoid Valve Series DS2000



- Compact size and light weight - 18mm width
- Large flow capacity / Cv 0.53
- Low power consumption / 1.7W(DC)
- Many variations available

5 port Pilot Solenoid Valve Sub Base Type Series DS3000



- Low power consumption/1.8WDC
- Large flow capacity/Cv0.9
- Compact light weight design
- Designed for non-lubricated service

5 port Solenoid Valve Series DS6000



- Compact size and light weight
- Large flow capacity/effective orifice Cv 5.0,
- Low power consumption-1.8w (DC)
- Many variations available
- Compact size and large flow capacity
- Effective orifice 90mm²
- Low power consumption



Hand Valve Series DH



- Porting of Rc(PT) 1/4, 3/8 and 1/2
- Improved abrasion resistance
- Aluminum die casting design for heavy applications
- Detented center position

ISO Interface Solenoid Valve Series DX1,DX2



- Easy to replace SoL V/V
- Prevent leaving bolt (integration)
- Protect spool from dust by P-MESH
- Easy maintenance (Integrated body / manifold gasket)
- Easy to make manifold assembly with integrated clamp tap
- Compact / Light design
- Attach manifold valve

ISO#2 Interface Regulator Series DX2R



- Sandwich regulator for DX2 valve (ISO#2)
- Light weight (760 g)&design (Height 53mm)
- Single handle position

3 - 5 port Mechanical Valve Series DM



- Interchangeable actuators

OR Valve (Shuttle Valve) Series DT220/UDT220



- 3 Ported check valve with one output and 2 pneumatic signal input ports.
- Output always supplied by high pressure inlet

Air Preparation Units

Modular Type FRL Combination Series PC



- Combinations 1/8" and 1/4"