



TPC ALL PRODUCTS

Actuators

Air Cylinder Series ACP/UACP



- Bore Size: $\phi 6, \phi 10, \phi 16$
- Long life
 - Low breakaway
 - Bumper equipped
 - Built-in magnet
 - Compact light weight design
 - Copper-free (optional)

Panel Mounting Cylinder Series APM



- Bore Size: $\phi 6, \phi 10, \phi 15$
- Higher shock-absorbency
 - Extremely durable
 - Various nipple options

Air Cylinder Series AS



- Bore Size: $\phi 20, \phi 25, \phi 30, \phi 40$
- Long life
 - Position sensors
 - Corrosion resistant aluminum
 - Bumper equipped(air cushion optional)

Air Cylinder Series AX



- Bore Size: $\phi 20, \phi 25, \phi 32, \phi 40$
- Long life
 - Low breakaway
 - Numerous mounting options
 - Designed for non-lubricated service

Air Cylinder Series AM



- Bore Size: $\phi 40, \phi 50, \phi 63, \phi 80, \phi 100$
- Built-in air cushion
 - Designed for long life & high speed
 - Wide stroke & bore sizes available

Air Cylinder Series AM2



- Bore Size: $\phi 40, \phi 50, \phi 63, \phi 80, \phi 100$
- Improved energy absorption
 - Improved cushion capacity
 - Increased kinetic energy absorption

Air Cylinder Series AL/ALX



- Bore Size: $\phi 125, \phi 140, \phi 160, \phi 180, \phi 200, \phi 250, \phi 300$
- Wide variety of stroke and bore ranges
 - Designed for long life and high speed operation
 - Built-in air cushion

Round Cylinder Series ARD/UARD



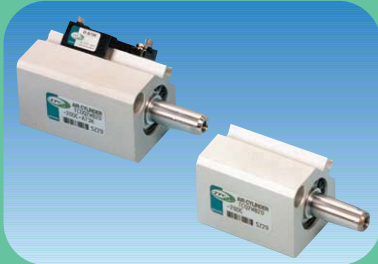
- Bore Size: $\phi 20, \phi 25, \phi 32, \phi 40, \phi 50, \phi 63$
- Compact light weight design
 - High speed actuator
 - Rubber bumper equipped
 - $\phi 80, \phi 100$:Inquire separately

Air Hydro Converter Series SAH



- Bore Size: $\phi 63, \phi 100, \phi 160$
- Emergency stop.
 - Intermediate stop and lock.

Compact Cylinder Series AQ/UAQ



- Bore Size: $\phi 12$, $\phi 16$, $\phi 20$, $\phi 25$
- Space saving design
 - Compact and light weight
 - 10 Bore sizes
 - Auto switch adaptable
 - Suitable for special applications

Compact Cylinder Series AQ2/UAQ2



- Bore Size : $\phi 12$, $\phi 16$, $\phi 20$, $\phi 25$, $\phi 32$,
 $\phi 40$, $\phi 50$, $\phi 63$, $\phi 80$, $\phi 100$
- Auto switch mounting allows for flexible designing requirements.
 - Long stroke, available.

Direct Mount Cylinder Series NDM



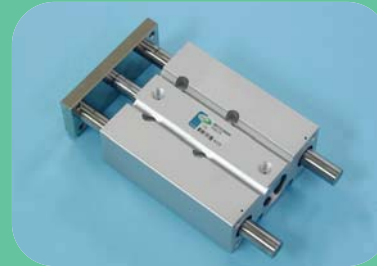
- Bore Size: $\phi 10$, $\phi 16$, $\phi 20$, $\phi 25$
- Space saving compact design
 - Multiple mounting options
 - Non-rotating rod type available
 - Non lubricated service (standard)

Plate Cylinder Series NP



- Bore Size: $\phi 50$, $\phi 63$
- Space saving compact design
 - Built-in speed controller
 - Various mounting options
 - Adaptable to welding applications
 - Mini auto switches available

Guide Cylinder Series AG



- Bore size : $\phi 12$, $\phi 16$, $\phi 20$, $\phi 25$, $\phi 32$,
 $\phi 40$, $\phi 50$, $\phi 63$, $\phi 80$, $\phi 100$
- Exclusive grease use, dust generation is minimized when cylinder is acting.

Guide Cylinder Series NGQ



- Bore size : $\phi 12$, $\phi 16$, $\phi 20$, $\phi 25$, $\phi 32$,
 $\phi 40$, $\phi 50$, $\phi 63$, $\phi 80$, $\phi 100$
- Exclusive grease use, dust generation is minimized when cylinder is acting.
 - High precision and prevention of rotation.
 - Side port

Clamp Cylinder With Lock Series ABK



- Built-in coil scraper for removing contamination on piston rod.
- Built-in air cushion and speed controller on both rod and head side.
- Locking and unlocking can be chosen by bolt / Manual unlocking.
- The same jig position as standard clamp cylinders(AJ)

Clamp Cylinder With Lock Series NSK



- Possible to attach Autoswitch in a tube
- Max. Operating pressure : 1MPa
- Compact size & Good design
- Built-in coil scraper ($\phi 40 \sim \phi 63$)

Rodless Cylinder Series TCRL



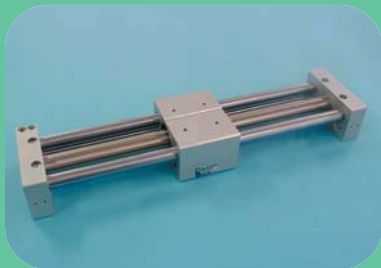
- Bore Size : $\phi 16$, $\phi 20$, $\phi 25$, $\phi 32$,
 $\phi 40$, $\phi 50$, $\phi 63$, $\phi 80$
- High rigidity, long service life
 - Easy maintenance
 - Various bore size
 - Suitable for the widest range of operating speeds(100~2,000mm/sec)



TPC ALL PRODUCTS

Actuators

Magnet Type Rodless Cylinder Series AMR/UAMR



- Bore Size : $\phi 10$, $\phi 16$, $\phi 20$, $\phi 25$, $\phi 32$, $\phi 40$.
- Precision stainless steel body for smooth actuation
 - Light weight
 - Compact design
 - Leak free
 - Non - lubricated type standard
 - Position sensing capable with guide type(G)

Table Cylinder(Linear Cylinder) Series NLCD



- Bore size : $\phi 6$, $\phi 8$, $\phi 12$, $\phi 16$, $\phi 20$, $\phi 25$, $\phi 32$
- Multiple mounting options

Table Cylinder(Linear Cylinder) Series NLCS



- Bore size : $\phi 6$, $\phi 10$, $\phi 16$
- Circulating bearings
 - Universal mounting

Slide Cylinder Series ASL



- Bore Size: $\phi 12$, $\phi 16$, $\phi 20$, $\phi 25$, $\phi 32$
- High accuracy
 - Auto switch adaptable
 - Compact type

Clamp Cylinder Series AJ/AJM



- Bore Size: $\phi 32$, $\phi 50$, $\phi 63$, $\phi 80$
- Two types of clevis widths are available (16.5mm, 19.5mm / Except $\phi 32$)
 - Compact and light weight
 - Non lube type
 - Possible to disassemble
 - Built in speed controller

Guide Cylinder Guide Unit Series GX/AGX



- Bore Size: $\phi 20$, $\phi 25$, $\phi 32$, $\phi 40$
- Compact integration of AGX/GX Series cylinder with guide rods.
 - Unit resists lateral loading and provides precise, non-rotating motion
 - The AGX/GX series is equipped with a standard magnet for auto switch capability

Double Rod Cylinder Series ADR



- Bore Size: $\phi 10$, $\phi 16$, $\phi 20$, $\phi 25$
- High lateral load capability
 - Adjustable stroke is available
 - Auto switch ready
 - Non-lube service standard.

Stopper Cylinder Series NST



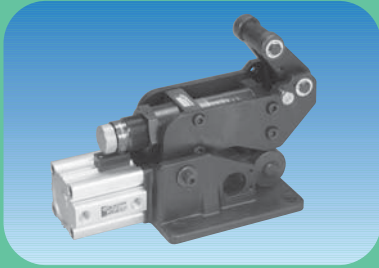
- Bore Size: $\phi 50$, $\phi 63$, $\phi 80$
- Position may be rotated to four directions by 90° each time
 - Includes a shock absorber that is easily maintained and replaced
 - Single-acting, double-acting (with springs)
 - Clean work environment with leak-free design for lubrication
 - Auto switch capable

Stopper Cylinder Series AST



- Bore Size: $\phi 50$, $\phi 63$, $\phi 80$
- Stopping direction can be changed every 90°
 - Easy maintenance
 - Three actuating options
 - single, double acting and double acting with spring
 - Auto switch capable

Horizontal Stopper Cylinder Series ASTH



Bore Size : $\phi 32$, $\phi 50$
 · Vertical stopper cylinder

Air Chuck Series NF



NFH2 : $\phi 10$, $\phi 16$, $\phi 20$, $\phi 25$
 NFW2 : $\phi 10$, $\phi 12$, $\phi 16$, $\phi 20$, $\phi 25$, $\phi 30$
 NFP2 : $\phi 12$, $\phi 16$, $\phi 20$, $\phi 25$, $\phi 32$, $\phi 40$
 · Easy to mount
 · Compact design
 · High holding power, high accuracy

Rotary Cylinder Series NR



NRP : 50, 63, 80, 100
 NRT : 30, 50, 70, 100
 NRC : 12, 15, 20, 30
 · Revolving cylinder, double piston type(rack and pinion).
 · Shock absorber adaptable

Clean Equipment

Shock Absorber Series SB



· Control design

Clean Series Round Cylinder (Round Cylinder) Series CR(CV)-ARD



Bore size : $\phi 50$, $\phi 63$
 · Low particle generation for clean room applications
 · Stainless steel piston rod(resistant to moisture and other chemicals)

Clean Series Table Series CR(CV,SC)-NLCD



Bore size : $\phi 25$, $\phi 32$
 · Low particle generation for clean room applications
 · Stainless steel piston rod(resistant to moisture and other chemicals)

Clean Series Compact Guide Cylinder Series CR(CV)-AGL



Bore size : $\phi 12$, $\phi 16$, $\phi 20$, $\phi 25$, $\phi 32$,
 $\phi 40$, $\phi 50$, $\phi 63$
 · Low particle generation for clean room applications.
 · Stainless steel piston rod(resistant to moisture and other chemicals)

Clean Series Compact Cylinder (square tube)/Double Acting, Single Rod Series CR(CV)-AQ2, ADQ2



Bore Size : $\phi 12$, $\phi 16$, $\phi 20$, $\phi 25$, $\phi 32$,
 $\phi 40$, $\phi 50$, $\phi 63$, $\phi 80$, $\phi 100$
 · Low particle generation for clean room applications
 · Stainless steel piston rod(resistant to moisture and other chemicals)

Clean Series Air Cylinder / Double Motion, Single Rod Series CR(CV)-AX



Bore Size : $\phi 20$, $\phi 25$, $\phi 32$, $\phi 40$
 · Low particle generation for clean room applications
 · Stainless steel piston rod(resistant to moisture and other chemicals)