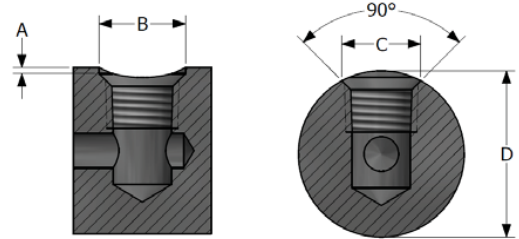


NPT – Non-Swivel Style for High Pressure (per SAE J476 or ANSI B1.20)

| Part Number | Dim A | Dim B | Dim C | Dim D (female) | Rated PSI (bar) | Housing Style | Seal Material | Repair Kit | Main Seals Package (5) |
|--------------|----------|-------------|-------------|----------------|-----------------|---------------|---------------|------------|------------------------|
| MITH-022021X | 1/8" NPT | 0.82 (20.8) | 1.24 (31.5) | 1/8" NPT | 10,000 (689) | Non-Swivel | Urethane* | MITR-02 | S1109-U70 |
| MITH-042041X | 1/4" NPT | 1.00 (25.4) | 1.41 (35.8) | 1/4" NPT | | | | | |
| MITH-062061X | 3/8" NPT | 1.18 (30.0) | 1.48 (37.6) | 3/8" NPT | | | | | |
| MITH-082081X | 1/2" NPT | 1.36 (34.5) | 1.85 (47.0) | 1/2" NPT | 8000 (552) | | | | |
| MITH-122121X | 3/4" NPT | 1.68 (42.7) | 1.94 (49.3) | 3/4" NPT | 7500 (517) | | | | |
| MITH-162161X | 1" NPT | 2.00 (50.8) | 2.07 (52.6) | 1" NPT | 6500 (448) | | | MITR-16 | S1216-U70 |

The **TwistMate MITC Series** connectors are designed to seal the port on the round of a surface better and with less effort. The unique chamfer seal design provides positive sealing with no thread sealants or wrench tightening.

| Part Number | Max. at Dim A | Bore Ø. Dim B | Chamfer Ø Dim C | Min. Body Ø Dim D |
|--------------|---------------|---------------|-----------------|-------------------|
| MITC-022021X | 0.030" | 0.500" | 0.440" | 0.880" |
| MITC-042041X | 0.045" | 0.625" | 0.570" | 1.200" |



NPT – Non-Swivel Style for Curved Surfaces (per SAE J476 or ANSI B1.20)

| Part Number | Dim A | Dim B | Dim C | Dim D (female) | Rated PSI (bar) | Housing Style | Seal Material | Repair Kit | Main Seals Package (5) |
|--------------|----------|-------------|-------------|----------------|-----------------|---------------|---------------|------------|------------------------|
| MITC-022021X | 1/8" NPT | 0.82 (20.8) | 1.24 (31.5) | 1/8" NPT | 5000 (345) | Non-Swivel | Urethane* | MITR-02 | S1010-U70 |
| MITC-042041X | 1/4" NPT | 1.00 (25.4) | 1.41 (35.8) | 1/4" NPT | | | | | |

NPT – Plug Style (per SAE J476 or ANSI B1.20)

| Part Number | Dim A | Dim B | Dim C | Rated PSI (bar) | Housing Style | Seal Material | Repair Kit | Main Seals Package (5) |
|-------------|------------|--------------|-------------|-----------------|---------------|---------------|------------|------------------------|
| MIT-022P | 1/8" NPT | 0.82 (21.8) | 1.24 (31.5) | 5000 (345) | Plug | Urethane* | MITR-02 | S1109-U70 |
| MIT-042P | 1/4" NPT | 1.00 (25.4) | 1.41 (35.8) | | | | | |
| MIT-062P | 3/8" NPT | 1.18 (30.0) | 1.48 (37.6) | | | | | |
| MIT-082P | 1/2" NPT | 1.36 (34.5) | 1.85 (47.0) | | | | | |
| MIT-122P | 3/4" NPT | 1.68 (42.7) | 1.94 (49.3) | 4000 (276) | | | | |
| MIT-162P | 1" NPT | 2.00 (50.8) | 2.07 (52.6) | | | | | |
| MIT-202P | 1 1/4" NPT | 2.38 (60.5) | 2.13 (54.1) | | | | | |
| MIT-242P | 1 1/2" NPT | 2.74 (69.6) | 2.40 (61.0) | 3000 (207) | | | | |
| MIT-322P | 2" NPT | 3.47 (88.1) | 2.68 (68.1) | 2500 (172) | | | | |
| MIT-402P | 2 1/2" NPT | 3.97 (100.8) | 3.42 (88.9) | 1500 (103) | | | | |
| MIT-482P | 3" NPT | 4.73 (120.1) | 3.68 (93.5) | | | | | |
| MIT-642P | 4" NPT | 5.73 (145.5) | 3.68 (93.5) | 1000 (69) | MITR-64 | S1348-U70 | | |

Dimensions are in inches (mm).

*Optional seal materials are FKM (Viton), EPDM and Buna N - Example: MIT-042PV = FKM (Viton)