

# GTEK AUTOMATION

A Division of Pacific Air Engineering, Inc.

## MODEL GTA-40RNS (BRUSH LESS TYPE) AIR/VACUUM PUMP

### TECHNICAL DATA

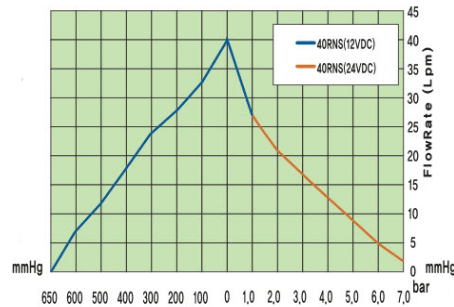
<b>P/N:</b>	<b>GTA-40RNS-BL-12VDC</b>	<b>GTA-40RNS-BL-24VDC</b>
<b>Voltage:</b>	12VDC	24VDC
<b>Rated Current:</b>	6.5 A	5.5 A
<b>Open Flow Air Output:</b>	* 1.41 CFM (40 LPM)	
<b>Max. Vacuum</b>	-25.59 InHg (-650 mmHg)	
<b>Max. Pressure</b>	14 PSI (1 Bar)	100 PSI (7 Bar)
<b>Dimensions:</b>	6.29" L x 7.00" H x 4.60" W (160mm L x 178mm H x 117mm W)	
<b>Weight:</b>	8.37 LBS (3.8 Kg)	
<b>Motor Type</b>	DC Motor, Brush Less Type, Ins. Class E	
<b>Connection Type:</b>	1/4" Female PT Inlet and Outlet Air Ports	
<b>Driver Type:</b>	Internal	

\* Approx. Flow Rates.



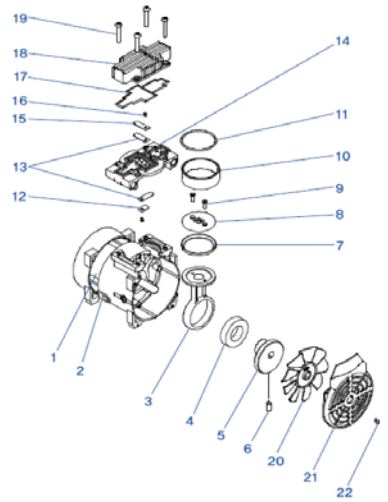
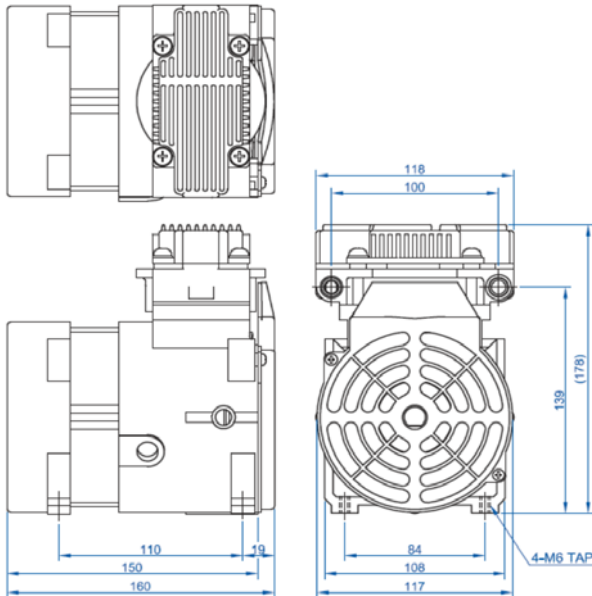
BLDC - Single head type

### Output Air Flow



Internal driver type : 40RNS

■ Drawing



No.	Description	Material	Q'ty	Remarks
1	Motor (BLDC Version)		1	110 Core
2	Wire Holder	NBR	1	
3	Rod	ADC 12	1	
4	Bearing		1	6006ZZ
5	Eccentric		1	
6	Set Screw		1	M6
7	Teflon Cup	PTFE	1	
8	Rod Cap	ADC 12	1	
9	Rod Screw	STS	2	M4
10	Cylinder	AL6061	1	Anodizing
11	O-Ring	Silicone	1	
12	Valve washer	STS	1	Small
13	Valve	STS	2	
14	Valve Plate	ADC 12	1	
15	Valve washer	STS	1	Large
16	Valve Screw		2	M4
17	Rec-Ring	Silicone	1	Red
18	Head Cap	ADC 12	1	
19	Head Screw		4	M6
20	Fan	P,P	1	Black
21	Fan Cover	P,C	1	Black
22	F/C Screw		2	M4

Applied Model : 40, 50, 60, 70RNS(RVS, RAS)

GTEK AUTOMATION

A Division of Pacific Air Engineering, Inc.

26212 Dimension Drive, Suite 150, Lake Forest, CA 92630

Ph. 949-680-4242, Fax. 949-680-4243, Email: Sales@Gtek-Automation.com

Web Site: Gtek-Automation.com