

REPAIR KIT INSTRUCTIONS



Connector Maintenance:

- A daily, weekly and periodic inspection of the booster and connectors by competent person is recommended. User must establish a regular interval for maintenance as determined by the user media and operational environment.
- Inspection should include visual checks of the ports, hoses, hydraulic oil level, wear, dirt accumulation and damage.
- Use only original **FasTest** spare parts that are designed for the application and are subject to strict quality control. See Warranty.

Safety Warnings – Guidelines:

- If instructions are not completely understood by operator or components are missing, contact **FasTest** before attempting use of the booster.
- **FasTest Pilot Booster & FE Connectors** must only be used with test pieces of a specific size as indicated by the part number. Improper use could cause separation of the connector from the test piece resulting in physical harm or damage.

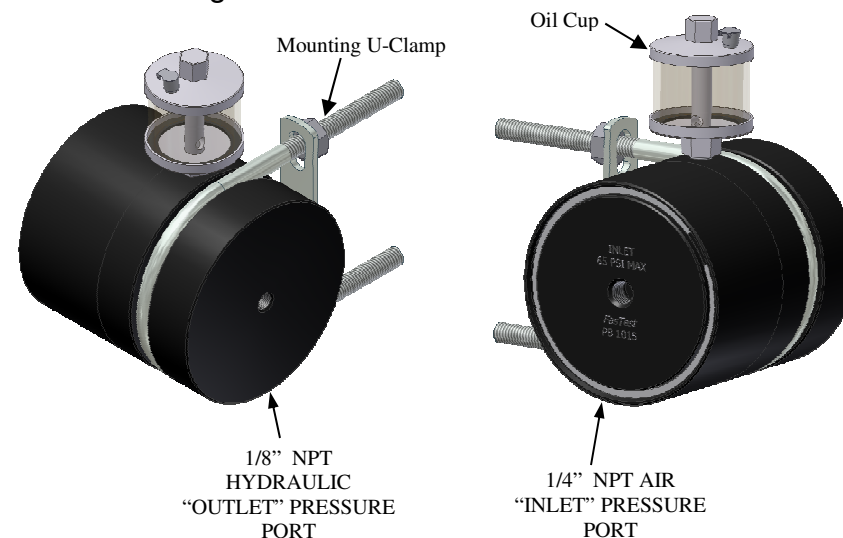
FasTest, Inc. Product Warranty

FasTest, Inc. warrants its products against defects of workmanship and/or material for 1 year from the date of the sale by FasTest, Inc. This warranty is void if the product is misused, tampered with or used in a manner that is not in accordance with FasTest, Inc. recommendations and/or instructions. FasTest, Inc. is not liable for consequential or other damages including, but not limited to, loss, damage, personal injury, or any other expense directly or indirectly arising from the use of or inability to use its products either separately or in combination with other products. ALL OTHER WARRANTIES EXPRESSED OR IMPLIED, WHETHER ORAL OR WRITTEN, INCLUDING BUT NOT LIMITED TO WARRANTIES OF MERCHANTABILITY OR FITNESS FOR A PARTICULAR PURPOSE ARE EXPRESSLY EXCLUDED.

Remedy under this warranty is limited to replacement of the product or an account credit in the amount of the original selling price, at the option of FasTest, Inc. All allegedly defective products must be returned prepaid transportation to FasTest, Inc. along with information describing the products performance, unless disposition in the field is authorized in writing by FasTest, Inc.

PB-1015 Pilot Pressure Booster Repair Kit Instructions

Description: The PB-1015 Pressure Booster is a compact pressure intensifier which uses compressed air to provide up to 600 psi hydraulic pressure. Designed to be used with a FasTest FE Connector and Urethane Seal Set for sealing on external threads and irregular surfaces.



Please thoroughly read and understand these repair instructions prior to operating the Pilot Booster. For reference see WP016 for **Pilot Booster** Operating/Installation Instructions.

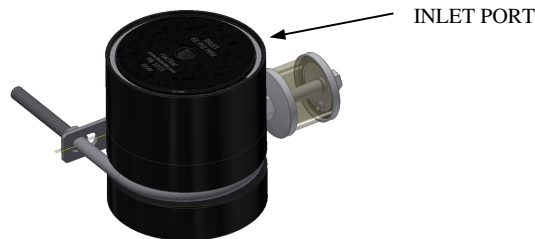
- Dis-assembly Instructions
- Re-assembly Instructions
- Safety Warnings – Guidelines

REPAIR KIT INSTRUCTIONS

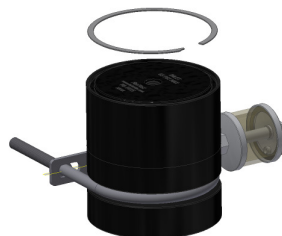


Dis-Assembly:

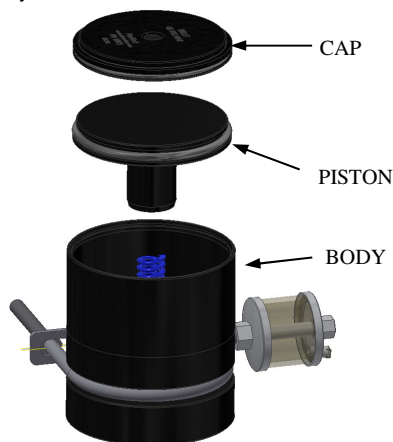
1. Dis-connect termination Inlet and outlet fittings.
2. Remove Booster from mount setup.
3. Using an arbor press, place Booster in a vertical position with "Inlet" port facing up.



4. Lower arbor press down against the face of the inlet port. Lock arbor in place.
5. Using a sharp pick or small flat screwdriver remove spiral retaining ring. Discard ring.

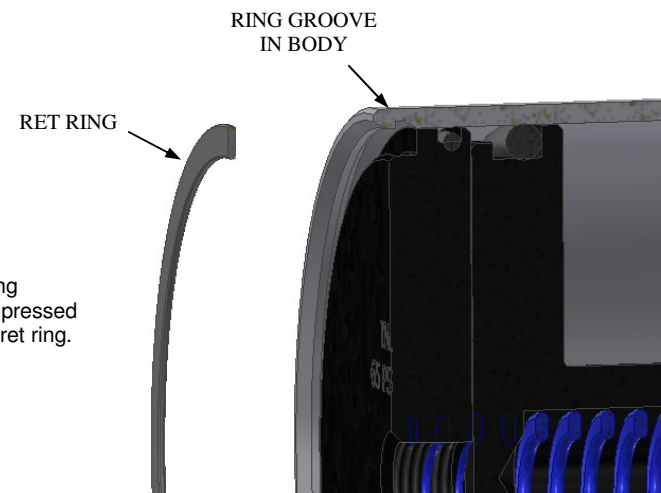


6. Using caution because the inlet cap is spring loaded, unlock arbor press and slowly raise the arbor up. Inlet cap and piston will come out of the body.
7. Remove and discard o-ring from cap and piston.
8. Remove and discard die spring.
9. Remove and discard (2) o-rings from down inside the body.
10. Clean cap, piston and body.



Re-Assembly:

1. Lube all new o-rings with petroleum jelly.
2. Install new o-rings in body grooves first.
3. Install piston and cap o-rings.
4. With body in a vertical position, place new spring into center of body.
5. Place piston down onto spring.
6. Place cap on piston, make sure markings on cap are facing out!!!
7. Place new spiral retaining ring onto cap.
8. Stand this assembly up on arbor press, lower press down onto cap.
9. Lower cap and piston until retaining ring groove in body is exposed enough to install new retaining ring.
10. Using small flat screwdriver Install retaining ring.



11. Section view showing groove and cap compressed far enough to install ret ring.

12. Re-connect fittings into the inlet and outlet ports on booster.
13. Re-fill as required with petroleum based hydraulic oil.
14. Mount booster back into setup. See FasTest operating instruction WP016 for reference.