

LINEAR

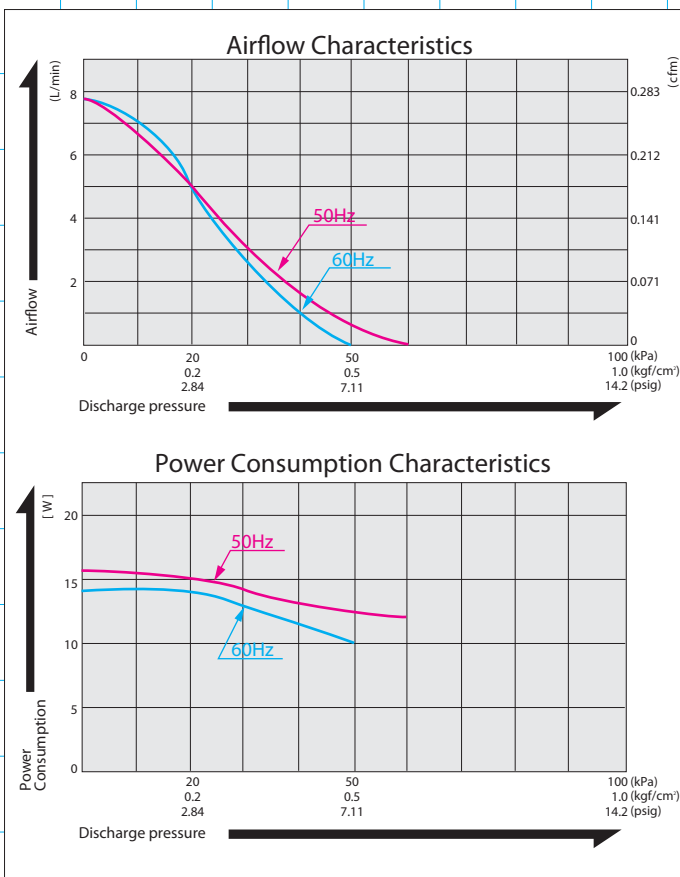
AC0102



MOTOR FREE
PISTON SYSTEM



Airflow & Power Consumption



Specifications

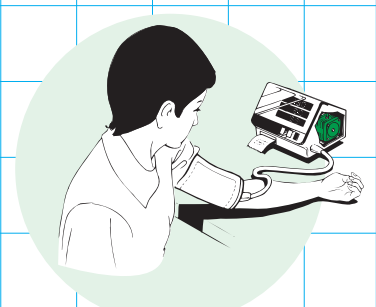
	(SI)	(EURO)	(U.S.A.)
Rated Pressure	20 kPa {0.2 kgf/cm ² }	0.2 bar	2.90 psig
Rated Airflow	5 L/min		0.177 cfm
Rated Voltage	115 V AC or 230 V AC		
Maximum Pressure	40 kPa {0.4 kgf/cm ² }	0.4 bar	5.80 psig
Power Consumption	14 W or 15 W		
Rated Frequency	60 Hz or 50 Hz		
Life Expectancy	10,000 hours		
Outlet	6 mm O.D. hose nipple		
Duty Cycle	Continuous		
Coil Insulation Class	E or its equivalent (JETL) and B for UL		
Mounting Dimensions	48 (L) x 62 (W) mm	1-7/8" (L) x 2-7/16" (W)	
Gross Weight	0.7 kg	1.54 Lbs.	
Leadwire Length	200 mm	7-7/8"	

Please read the page of "How to Use This Catalog" first for correct use of compressors and pumps.

Application Examples



Endoscope



Blood Pressure Tester

Sketch Drawing and Mounting Dimensions Diagram (mm)

