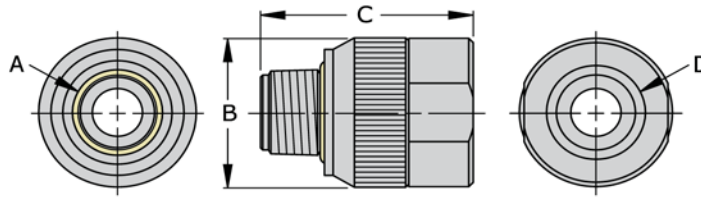


**FasCal - "Twist to Connect" Connectors for Female Threads**



**Higher Pressure Connectors for NPT Female Threads**

Part Number	Connects to Dim "A"	Diameter Dim "B"	Length Dim "C"	Term Thd Dim "D"	Rated PSI	Housing Style	Seal Material	Repair Kits	Main Seals Package (5)
MITH-022021X	1/8" NPT	0.82"	1.24"	1/8" NPT	10,000	Non Swivel	Urethane	MITR-02	S1109-U70
MITH-042041X	1/4" NPT	1.00"	1.41"	1/4" NPT	10,000			MITR-04	S1111-U70
MITH-062061X	3/8" NPT	1.18"	1.48"	3/8" NPT	10,000			MITR-06	S1113-U70
MITH-082081X	1/2" NPT	1.36"	1.85"	1/2" NPT	8000			MITR-08	S1209-U70
MITH-122121X	3/4" NPT	1.68"	1.94"	3/4" NPT	7500			MITR-12	S1213-U70
MITH-162161X	1" NPT	2.00"	2.07"	1" NPT	6500			MITR-16	S1216-U70

**Higher Pressure Connectors for Female SAE O-Ring Boss**

Part Number	Connects to Dim "A"	Diameter Dim "B"	Length Dim "C"	Term Thd Dim "D"	Rated PSI	Housing Style	Seal Material	Repair Kits	Main Seals Package (5)
MITH-044021X	-4 (7/16-20)	0.82"	1.29"	1/8" NPT	10,000	Non Swivel	Urethane	MITR-02	S1109-U70
MITH-064041X	-6 (9/16-18)	1.00"	1.41"	1/4" NPT	10,000			MITR-04	S1111-U70
MITH-084081X	-8 (3/4-16)	1.36"	1.85"	1/2" NPT	8000			MITR-08	S1209-U70
MITH-104081X	-10 (7/8-14)	1.36"	1.85"	1/2" NPT	7500				S1209-U70
MITH-124121X	-12 (1 1/16-12)	1.68"	1.94"	3/4" NPT	7500			MITR-12	S1213-U70
MITH-144161X	-14 (1 3/16-12)	2.00"	2.13"	1" NPT	7000			MITR-16	S1216-U70
MITH-164161X	-16 (1 5/16-12)	2.00"	2.13"	1" NPT	7000				S1217-U70

For Skydrol hydraulic fluid use, specify EPR seal material - "E".

Example: Connector - MITH-042041X**E** Seal Set - S1111-**E**70