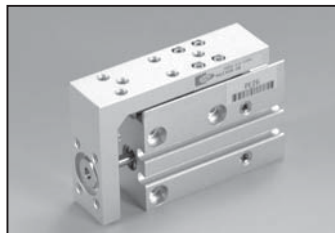


Table Cylinder(Linear Cylinder) Series NLCS

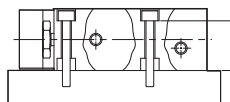
Bore size : $\phi 6$, $\phi 10$, $\phi 16$



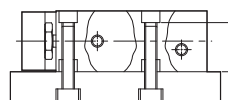
- Circulating bearings
- Universal mounting

Mounting Possible in Various Directions

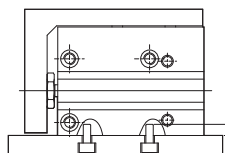
1. Side mounting(Body through hole)



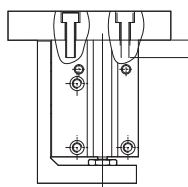
2. Side mounting(Body tapped)



3. Bottom side mounting



4. Axial mounting(Body tapped)



How to Order

NLCS — 10 — 30 W8H S

1

1 New Linear Cylinder Single Rod

2 Bore size(ϕ mm)–Stroke(mm)

6 – 5,10,15,20,25,30
10 – 5,10,15,20,25,30
16 – 5,10,15,20,25,30

3 Type of Auto Switch

Blank : None
W8H : With Contact Point(Horizontal Type)

2

W8V : With Contact Point(Vertical Type)
W9H : Without Contact Point(Horizontal Type)
W9V : Without Contact Point(Vertical Type)
W9HN : Without Contact Point(NPN), 3wire
W9HP : Without Contact Point(PNP), 3wire
※ When the lead wire Lenth is 3m, add an L to the end number of the product (ex:W8HL, W9VL)

3

4 Number of Auto Switch

Blank : 2pcs
S : 1pc
n : npc

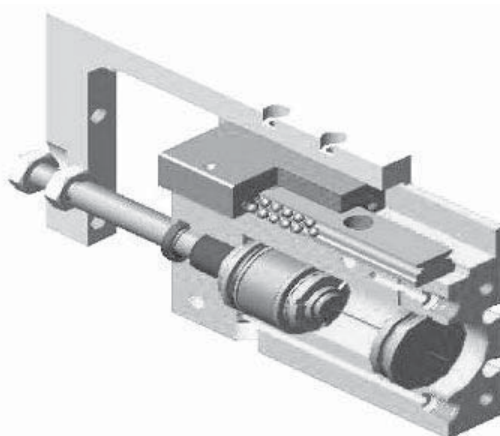
4

Specifications

Bore size(ϕ mm)	6, 10, 16
Fluid	Air
Operation	Double Acting
Operating Pressure	0.15~0.7Mpa(21.3~99.6psi)
Proof Pressure	1.05Mpa(152.2psi)
Ambient and Media Temp $^{\circ}$ C($^{\circ}$ F)	-10~60 $^{\circ}$ C(14~140 $^{\circ}$ F)
Piston Speed	50~500mm/s
Lubrication	Non Lube
Auto Switch(Optional)	Exsting plug:DC(24V)/AC(110V) Non plug:DC(24V)
Stroke length tolerance	0~+1mm
Cushion	Rubber Damper(Both side)

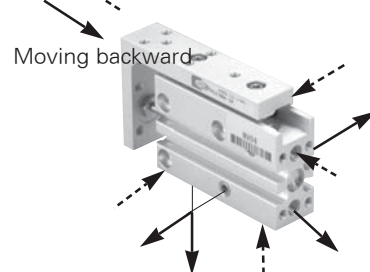
Standard Stroke

Models	Standard Stroke						
	5	10	15	20	25	30	40
NLCS6	■	■	■	■	■	■	—
NLCS10	■	■	■	■	■	■	■
NLCS16	■	■	■	■	■	■	—



Moving forward

Moving backward



ACP/
UACP

APM

AS

AX

AM

AM2

AL/
ALX

AQ/
UAQ

ADQCP

AQ2/
UADQ2

AG/
UAG

NGQ/
UNGQ

AJ/
AJM

ABK

NSK

GX/
AGX

NDM

ADR

AMR/
UAMR

NST

AST

ASTH

NF

NLCD

NLCS

TCRL

NP

ARD/
UARD

NR

ASL

SB

SAH

CR/
CV

CR/
CV-AQ2,ADQ2

CR/
CV-AX

CR/
CV-NLCD

CR/
CV-AGL

DR100

RS

DV1000/
3000/4000

DS300

DS2000