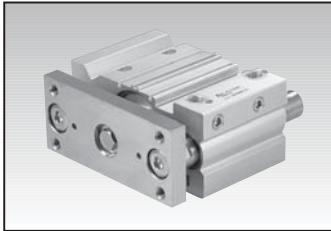


Guide Compact Cylinder Series NGQ

Bore Size: ϕ 12, ϕ 16, ϕ 20, ϕ 25,
 ϕ 32, ϕ 40, ϕ 50, ϕ 63,
 ϕ 80, ϕ 100

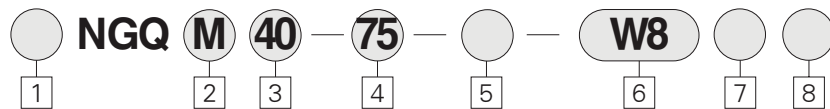


- Exclusive grease use, dust generation is minimized when cylinder is acting.
- High precision and prevention of rotation.
- Side port

Action	Series	Bore Size (mm)	Port Size		Standard Stroke (mm) *1	Description	Operating Pressure kgf/cm ² (psi)
			AG	UAG			
Slide Bearing / Double Acting	NGQ / UNGQ	ϕ 12	M5 \times 0.8	10-32 UNF	10, 20, 30, 40, 50, 75, 100, 125, 150, 175, 200	Suitable for Stopper / Rubber Cushion at Both Sides	0.12~9.9 (2~140)
		ϕ 16					
		ϕ 20	Rc(PT) 1/8	NPT 1/8	20, 30, 40, 50, 100, 125, 150, 175, 200, 250, 300		0.1~9.9 (1.4~140)
		ϕ 25					
		ϕ 32	Rc(PT) 1/4	NPT 1/4	25, 50, 75, 100, 125, 150, 175, 200, 250, 300		
		ϕ 40					
		ϕ 50	Rc(PT) 3/8	NPT 3/8	25, 50, 75, 100, 125, 150, 175, 200		
		ϕ 63					
ϕ 80							
ϕ 100							
Ball Bearing / Double Acting	AGL / UAGL	ϕ 12	M5 \times 0.8	10-32 UNF	10, 20, 30, 40, 50, 75, 100, 125, 150, 175, 200	Suitable for Hitting & Pushing / Rubber Cushion at Both Sides	0.12~9.9 (2~140)
		ϕ 16					
		ϕ 20	Rc(PT) 1/8	NPT 1/8	20, 30, 40, 50, 100, 125, 150, 175, 200, 250, 300		0.1~9.9 (1.4~140)
		ϕ 25					
		ϕ 32	Rc(PT) 1/4	NPT 1/4	25, 50, 75, 100, 125, 150, 175, 200, 250, 300		
		ϕ 40					
		ϕ 50	Rc(PT) 3/8	NPT 3/8	25, 50, 75, 100, 125, 150, 175, 200		
		ϕ 63					
ϕ 80							
ϕ 100							

*1. Intermediate Stroke : A spacer of 5, 10, 15 and 20 mm is used for intermediate stroke (for example 55, 60, 65 etc.)
[Example : NGQM50-55 is produced by installing 20 mm spacer in NGQM50-75]

How to Order



1 Port

(Built-in Magnet)
Blank : Metric(PT)
U : NPT, UNF

2 Types of Bearings

M : Slide Bearing (Suitable for Stopper)
L : Ball Bearing Bushing (Suitable for Lifting/ Pushing)

3 Bore Size (inch)

12 : ϕ 12mm (1/2 Nom.)
16 : ϕ 16mm (5/8 Nom.)
20 : ϕ 20mm (3/4 Nom.)
25 : ϕ 25mm (1 Nom.)
32 : ϕ 32mm (1 1/4 Nom.)

40 : ϕ 40mm (1 5/8 Nom.)
50 : ϕ 50mm (2 Nom.)
63 : ϕ 63mm (2 1/2 Nom.)
80 : ϕ 80mm (3 1/4 Nom.)
100 : ϕ 100mm (4 Nom.)

4 Cylinder Stroke (mm)

※ Refer to the upside table

5 Option

Blank : Standard
XC16 : Copper-Free

6 Type of Auto Switches

Blank : Without Auto Switch (Reed Switch)
W4 : W4 (2 wire DC24V, AC100V) (ϕ 32~ ϕ 100)

W2P : Magnetism resistant switch (ϕ 32~ ϕ 100)
W8H(V) : (2 wire, DC24V, AC100V) (ϕ 12~ ϕ 25)

[Solid State Switch]
W9H(V) : (2(3) wire system, DC24V) (ϕ 12~ ϕ 25 only)

7 Lead Wire Length

Blank : 0.5m
L : 3m

8 Number of Switches

Blank : 2 Pcs.
S : 1 Pc.

Standard Specifications

Operation	Double Acting	
Fluid	Air	
Proof Pressure	15.3kgf/cm ² (217 psi)	
Max. Operating Pressure	9.9kgf/cm ² (142 psi)	
Min. Operating Pressure	ϕ 12, ϕ 16	1.2kgf/cm ² (17 psi)
	ϕ 25~ ϕ 100	1.0kgf/cm ² (14 psi)
Ambient and Fluid Temperature	-10~+60°C (14~140 °F)	
Piston Speed	50~500mm/sec (2~20 inch/sec)	
Cushion	Rubber Cushion at Both Sides	
Lubrication	Non-Lubrication	
Stroke Tolerance	+1.5 0 mm	

ACP/
UACP

APM

AS

AX

AM

AM2

AL/
ALX

AQ/
UAQ

ADQCP

AQ2/
UADQ2

AG/
UAG

NGQ/
UNGQ

AJ/
AJM

ABK

NSK

GX/
AGX

NDM

ADR

AMR/
UAMR

NST

AST

ASTH

NF

NLCD

NLCS

TCRL

NP

ARD/
UARD

NR

ASL

SB

SAH

CR/
CV

CR/
CV-AQ2,ADQ2

CR/
CV-AX

CR/
CV-NLCD

CR/
CV-AGL

DR100

RS

DV1000/
3000/4000

DS300
DS2000