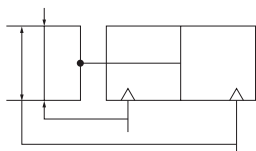
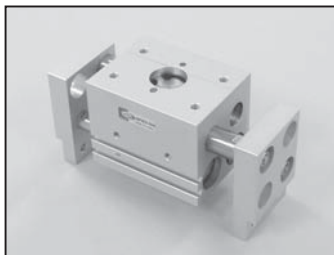


Air Chuck Series NFW2

Bore Size: $\phi 10$, $\phi 16$, $\phi 20$, $\phi 25$,
 $\phi 30$



Symbol

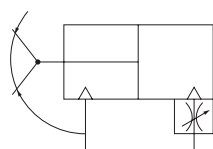
Specification

Models	NFW2-10A	NFW2-12A	NFW2-16A	NFW2-20A	NFW2-25A	NFW2-30A	
Cylinder (mm)	10	12	16	20	25	30	
Standard Stroke (mm)	width at closing	36	44	54	68	100	
	width at opening	46	64	84	116	170	
	Stroke	10	20	30	48	50	70
Theoretical gripping force(N) 1N \approx 0.102kgf	close	(P-0.16) ×	(P-0.14) ×	(P-0.09) ×	(P-0.07) ×	(P-0.06) ×	(P-0.03) ×
	open	(80-3L)	(140-5L)	(250-11L)	(320-10L)	(550-17L)	(830-18L)
Thread	M5						
Weight (kgf)	0.17	0.29	0.475	1.15	2.01	3.03	
Max. gripping length	30	45	75	100	120	150	
Fluid	air						
Operating Pressure · kgf/cm ² (psi)	3 ~ 7(42.6~99.5psi)						
Lubrication	None						
Temperature · °C(°F)	5 ~ 60°C(41~140°F)						
Repeatability	Initial	±0.1					
	After 1 million operation	±0.2					
Max. operating frequency	60						
Auto Switch	W9H,W9V						

Air Chuck Series NFP2

(Double acting)

Bore Size: $\phi 10$, $\phi 16$, $\phi 20$, $\phi 25$,
 $\phi 32$, $\phi 40$



Symbol

Specification

Models	NFP2-12D	NFP2-16D	NFP2-20D	NFP2-25D	NFP2-32D	NFP2-40D	
Cylinder (mm)	12	16	20	25	32	40	
Stroke (mm)	-5 ~ 15	-5 ~ 15	-5 ~ 20	-5 ~ 20	-5 ~ 20	-5 ~ 20	
Theoretical gripping force(N) 1N \approx 0.102kgf	close	1.0×P/L	2.0×P/L	3.7×P/L	6.8×P/L	11.3×P/L	23.9×P/L
	open	0.75×P/L	1.5×P/L	2.8×P/L	5.7×P/L	8.8×P/L	19.5×P/L
Thread	M5	M5	M5	M5	PT1/8	PT1/8	
Weight (kgf)	0.05	0.06	0.2	0.3	0.4	0.76	
Soft Jaw length (mm)	45	60	70	75	85	120	
Fluid	air						
Operating Pressure(kgf/cm ²)psi	3 ~ 7						
Lubrication	None						
Temperature (°C(°F))	5 ~ 60°C(40~140°F)						
Repeatability	Initial	±0.1					
	After 1 million operation	±0.2					
Max. operating frequency	80	80	60	60	60	60	
Auto Switch	-	-	W9H,W9V	W9H,W9V	W9H,W9V	W9H,W9V	

ACP/
UACP

APM

AS

AX

AM

AM2

AL/
ALX

AQ/
UAQ

ADQCP

AQ2/
UADQ2

AG/
UAG

NGQ/
UNGQ

AJ/
AJM

ABK

NSK

GX/
AGX

NDM

ADR

AMR/
UAMR

NST

AST

ASTH

NF

NLCD

NLCS

TCRL

NP

ARD/
UARD

NR

ASL

SB

SAH

CR/
CV

CR/
CV-AQ2,ADQ2

CR/
CV-AX

CR/
CV-NLCD

CR/
CV-AGL

DR100

RS

DV1000/
3000/4000

DS300

DS2000