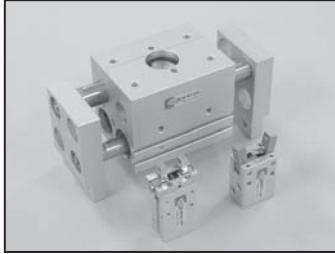


Air Chuck Series NF

NFH2 : ϕ 10, ϕ 16, ϕ 20, ϕ 25

NFW2 : ϕ 10, ϕ 12, ϕ 16, ϕ 20, ϕ 25, ϕ 30

NFP2 : ϕ 12, ϕ 16, ϕ 20, ϕ 25, ϕ 32, ϕ 40



- Easy to mount
- Compact design
- High holding power, high accuracy

1 Air Chuck Series

N : NEW
F : Air Finger
H : Horizontal
W : Wide P : Pivot
2 : Number of fingers

2 NFH2 Bore Size

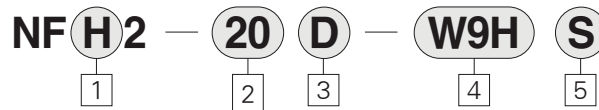
Opening/Closing Stroke(mm)

Model	Bore Size	Opening/closing Stroke
10	10	4
16	16	6
20	20	10
25	25	14

NFW2 Bore Size
Opening/Closing Stroke(mm)

Model	Bore Size	Opening/closing Stroke
10	10	10
12	12	20
16	16	30
20	20	40
25	25	50
30	30	60

How to Order



NFP2 Bore Size

Opening/Closing Stroke(mm)

Model	Bore Size	Opening/closing angle
12	12	-5~15°
16	16	
20	20	-5~20°
25	25	
32	30	
40	40	

3 Action

NFH2, NFP2
D : Double acting

NFW2

A : Vertical Direction
B : Horizontal Direction

4 AUTO SWITCH Specification

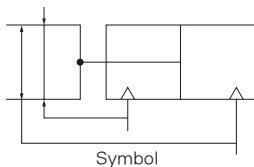
Blank : without Auto Switch
(Built in Magnet)
W9H : Mini Solid State Auto Switch
(Horizontal)
W9V : Mini Solid State Auto Switch
(Vertical)
W9HN : Solid State Switch
(3wire, NPN)
W9HP : Solid State Switch
(3wire, PNP)
Impossible to install Auto Switch
(NFP2-12, 16)

5 Number of AUTO SWITCH

Blank : 2pcs
S : 1pc

Air Chuck Series NFH2 (Double acting)

Bore Size: ϕ 10, ϕ 16, ϕ 20, ϕ 25



Specification

Models	NFH2-10D	NFH2-16D	NFH2-20D	NFH2-25D
Cylinder (mm)	10	16	20	25
Standard Stroke (mm)	width at closing	6	7	9
	width at opening	10	13	23
	Stroke	4	6	10
Theoretical gripping force(N) 1N=0.102kgf	close	1.1	3.5	6.4
	open	1.7	4.1	6.7
Piping Method	M3	M5	M5	M5
Weight (kgf)	0.05	0.12	0.25	0.45
L(mm)	30	35	60	80
Fluid	Air	Air	Air	Air
Operating Pressure · kgf/cm ² (psi)	3 ~ 7(42.6~99.5)			
Lubrication	None(Non-Lube)			
Temperature · °C(°F)	5 ~ 60°C(41~140°F)			
Repeatability	Initial	±0.01		
	After 1 million ope	±0.1	±0.05	
Max. opening frequency	160			
Auto switch	W9H,W9V			