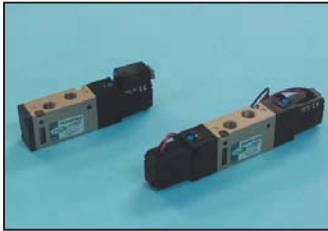
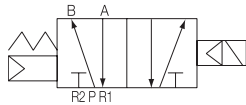


5 Port Solenoid Valve Series DS2000

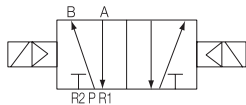


- Compact size and light weight - 18mm width
- Large flow capacity / Cv 0.53
- Low power consumption / 1.7W(DC)
- Many variations available

< Symbol >



Single : DS 2120



Double : DS 2220

| Body Ported Type | Model | Port Size | | Position | Solenoid | Effective Orifice mm ² (Cv) | Pressure kgf/cm ² (psi) |
|------------------|--------|-----------|--------|----------|----------|--|------------------------------------|
| | | DS | UDS | | | | |
| 5 Port | DS2120 | Rc(PT)1/8 | NPT1/8 | 2 | Single | 9.5(0.53) | 1.8~7(25~100) |
| | DS2220 | | | | Double | | 1~7(14~100) |

How to Order

- Valve **DS 2** **1** **2** **0** - **1** **G** - **01** - **XWL** * *

1 Series

Blank : Metric Rc(PT)
U : NPT

2 Type of Actuation

1 : 2 Position Single
2 : 2 Position Double

3 Body Type

2 : Body Ported Type

4 Voltage

1 : AC 110V(50/60Hz)
2 : AC 220V(50/60Hz)
3 : AC 120V(50/60Hz)

4 : 240V
5 : DC 24V
6 : DC 12V
※ 3,4 : Non-Standard.

5 Electrical Entry/Indicator Light and Surge Suppression

G : Grommet
H : Plug Connector Type (Horizontal type, with Indicator light)
HZ: Plug Connector Type(with Indicator Light and Surge Voltage Suppressor)
※ Plug Connector Type of DC has only HZ type

6 Port Size

01 : 1/8

7 Length of lead wire

Blank : 300mm (Standard)
XWL01 : 100mm
XWL02 : 200mm
:
:
XWL20 : 2000mm
∴ Other length : Contact us

- Manifold Base

DSM2 - **20** - **05** **1**

1 Series

Blank : Metric (PT)
U : NPT Manifold for Series UDS2000

2 20

Manifold Specifications

3 Stations

03 stations
01 stations
02 stations
20 stations

Standard/Specifications

| | | DS2120/UDS2120 | DS2220/UDS2220 |
|--|----|--------------------------------------|------------------------------------|
| Fluid | | Air | |
| Operating Pressure Range | | 1.5~7kgf/cm ² (25~100psi) | 1~7kgf/cm ² (14~100psi) |
| Effective Orifice (mm ²)(Cv) | | 9.5(0.53) | |
| Ambient and Fluid Temperature | | Max. 50°C (122 °F) | |
| Response Time(5kgf/cm ²) | | 20ms or Less | |
| Max. Operating Frequency | | 10c/s | |
| Lubrication | | Not Required | |
| Manual Override | | Non-Locking Push Type | |
| Impact/Vibration Resistance | | 30G/5G(8.3~2000HZ) | |
| Enclosure | | Dust Proof | |
| Coil Voltage | | AC 50/60HZ 110V, 220V, DC12V, 24V | |
| Allowable Voltage | | -15%~ +10% of Rated Voltage | |
| Coil Insulation | | Class B or Equivalent(130°C) | |
| Power Consumption | AC | Starting | 4.5VA(50HZ), 4.2VA(60HZ) |
| | | Holding | 3.0VA(50HZ), 2.6VA(60HZ) |
| | DC | 1.7W | |
| Weight · gf (l b) | | 100(0.22 l b) | 150(0.33 l b) |
| Surge Suppressor Circuit | | AC:Varistor , DC:Diode | |
| Indicator Light | | LED | |

- ACP/ UACP
- APM
- AS
- AX
- AM
- AM2
- AL/ ALX
- AQ/ UAQ
- ADQCP
- AQ2/ UADQ2
- AG/ UAG
- NGQ/ UNGQ
- AJ/ AJM
- ABK
- NSK
- GX/ AGX
- NDM
- ADR
- AMR/ UAMR
- NST
- AST
- ASTH
- NF
- NLCD
- NLCS
- TCRL
- NP
- ARD/ UARD
- NR
- ASL
- SB
- SAH
- CR/ CV
- CR/ CV-AQ2,ADQ2
- CR/ CV-AX
- CR/ CV-NLCD
- CR/ CV-AGL
- DR100
- RS
- DV1000/ 3000/4000
- DS300 DS2000