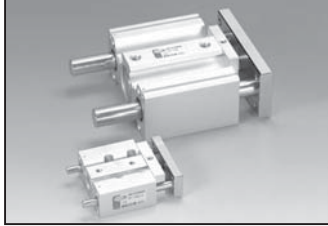


**Clean Series Compact
Guide Cylinder**

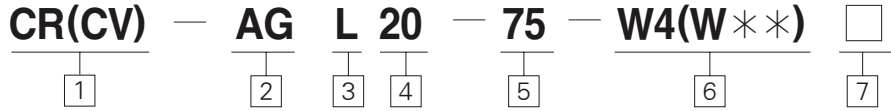
Series CR(CV)AGL

Bore size : ϕ 12, ϕ 16, ϕ 20, ϕ 25,
 ϕ 32, ϕ 40, ϕ 50, ϕ 63



- Low particle generation for clean room applications.
- Stainless steel piston rod(resistant to moisture and otehr chemicals)

How to Order



- 1 Clean Series**
CR : Relief Port Type
CV : Vacuum Suction Type
- 2 Compact Cylinder with Guide magnet, bumper, no lubrication basic feature of the type**
- 3 Sort of Bearing**
L : ball bush bearing
- 4 Bore Size**
12 : 12mm 16 : 16mm
20 : 20mm 25 : 25mm
- 5 Cylinder Stroke(mm)**
Please refer to the table of cylinder stroke.
- 6 Sorts of Auto Switch**
Blank : no auto switch (cylinder with built-in magnet) auto switch with contacting point
- W4(W4 in 2 or 3 lines DC 24V, AC110V)
- W13(2 lines, DC 24V, AC110V) auto switch with contacting point
- W1H(3 lines, DC 24V)
※ The standard length of lead wire is 0.5m
※ For length lead wire over 3m, L is added to the end of part number.
ex) W13M, W1HL
(ϕ 12~25 : W13M and W1H are applied.)
(ϕ 32~63 : W4 is applied.)
- 7 Symbols of Auto Switch**
Blank : 2 pieces attached
S : 1 piece attached

Specifications

Bore size	ϕ 12, ϕ 16, ϕ 20, ϕ 25, ϕ 32, ϕ 40, ϕ 50, ϕ 63	
Models	Relief Port Type, Vacuum Suction Type	
Operation Type	Double Acting, Single Rod(Non-Lubrication)	
Port Size	ϕ 12, ϕ 16	M5×0.8
	ϕ 20, ϕ 25, ϕ 32, ϕ 40 ϕ	Rc(PT) 1/8
	50, ϕ 63	Rc(PT) 1/4
Fluid	Air	
Proof Pressure	1.5MPa(217.6psi)	
Max. Operation Pressure	1.0MPa(140.8psi)	
Min. Operation Pressure	ϕ 12, ϕ 16	0.12MPa(17.40psi)
	ϕ 20~ ϕ 63	0.1MPa(14.50psi)
Ambient and Fluid Temperature · °C(°F)	-10°C~60°C(14~140°F)(Anti Freezing)	
Cushion	Rubber Cushion Type	
Stroke Tolerance	$^{+1.5}_0$ mm	
Piston Speed	50~400mm/s	

Bore Size(mm)	Non-Rotating Accuracy
12	±0.10°
16	
20	
25	±0.09°
32	
40	±0.08°
50	
63	
	±0.06°

Table of standard stroke/air pressure(no lubrication type)
(Unit:mm)

Bore Size	Cylinder stroke
12, 16	10, 20, 30, 40, 50, 75, 100
20, 25	20, 30, 40, 50, 75, 100
32, 40, 50, 63	25, 50, 75, 100, 125, 150

△ Cautions

※ Production of middle stroke
By installing spacer in the cylinder of standard stroke, it is possible to produce middle stroke at every 5mm.
Ex) For AGL, spacer with width of 5mm is installed in the cylinder of standard stroke AGL20-30.

- ACP/ UACP
- APM
- AS
- AX
- AM
- AM2
- AL/ ALX
- AQ/ UAQ
- ADQCP
- AQ2/ UADQ2
- AG/ UAG
- NGQ/ UNGQ
- AJ/ AJM
- ABK
- NSK
- GX/ AGX
- NDM
- ADR
- AMR/ UAMR
- NST
- AST
- ASTH
- NF
- NLCD
- NLCS
- TCRL
- NP
- ARD/ UARD
- NR
- ASL
- SB
- SAH
- CR/ CV
- CR/ CV-AQ2, ADQ2
- CR/ CV-AX
- CR/ CV-NLCD
- CR/ CV-AGL
- DR100
- RS
- DV1000/ 3000/4000
- DS300
- DS2000