

Stopper Cylinder Series AST

Bore Size: $\phi 50$, $\phi 63$, $\phi 80$

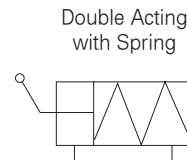
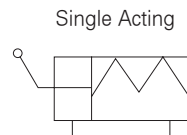
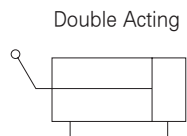


- Stopping direction can be changed every 90°
- Easy maintenance
- Three actuating options
: Single, double acting and double acting with spring
- Auto switch capable

Specifications	
Action	Double Acting, Single Acting(Spring Extend), Double Acting with Spring
Fluid	Air
Proof Pressure	1.5MPa(213psi)
Max. Operating Pressure	1MPa(142.2psi)
Min. Operating Pressure	Double acting: 1MPa(142.2psi)
	Single acting: 1MPa(142.2psi)
Ambient and Fluid Temperature	-5℃ ~ 60℃ (23~140°F)
Lubrication	Not required
Cushion	Rubber bumper
Stroke Length Tolerance	+1.4 0
Mounting	Flange
Auto Switch	Attachable
Type	Roller Type, Direct Type

Standard Stroke	
Bore Size	Standard Stroke(mm)
$\phi 50$	20, 25, 30, 40
$\phi 63, \phi 80$	30, 40

< Symbol >



How to Order

AST **(1)** **(2)** — **(3)** **(4)** **(5)** — **(6)** **(7)** — **(8)** **(9)**

1 Type

R : Roller
D : Direct

2 Bore Size

50 : 50mm
63 : 63mm
80 : 80mm

3 Stroke

$\phi 50$: 20, 25, 30, 40
 $\phi 63$: 30, 40
 $\phi 80$: 30, 40

4 Action

Blank : Single Acting
D : Double Acting
Z : Double Acting with Spring

5 Roller

Blank : Material(MC Nylon)
M : Rolled steel(SPA material)

6 Port Location

	Location	$\phi 50$	$\phi 63,80$
Blank	Port-A:on body	N/A	○
	Port-B:on flange		
V	Port-A :on flange	○	○
	Port-B	(Standard)	

7 Valve

Blank : None
1 : With Valve(100V AC)
2 : With Valve(200V AC)
3 : With Valve(120V AC)
4 : With Valve(240V AC)
5 : With Valve(24V DC)

8 Type of Auto Switch

Blank : Without Auto Switch
W4 : Existing plug Point Auto Switch
W8H/W8V: Existing Plug Point round auto switch (horizontal Type/

vertical Type)

W9H/W9V: non Plug Point round auto switch (horizontal Type/ vertical Type)

Caution)

1. According to the lead line direction of the existing plug point or non plug point auto switch, it is separated into horizontal/vertical types.
2. When the lead wire length is 3m add an L to the end number of the product. ex) W8H: W8HL
3. W4, W8H(V):Multiple use of DC24V, AC110V / Multiple use of W9H(V):DC24V

9 Auto Switch

Blank : 2pcs.
S : 1pc.