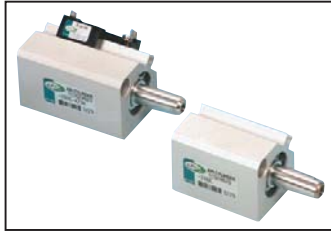


# Compact Cylinder Series AQ/UAQ

Bore Size:  $\phi$  12,  $\phi$  16,  $\phi$  20,  $\phi$  25



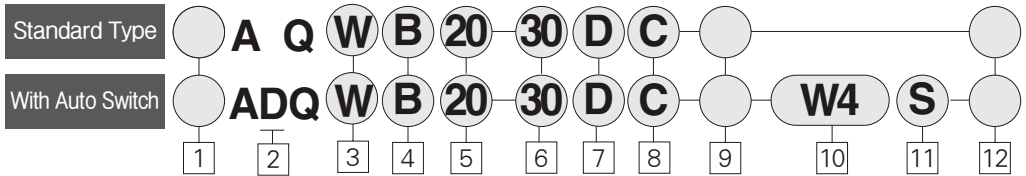
- Space saving design
- Compact and light weight
- 10 bore sizes
- Auto switch adaptable
- Suitable for special applications

Bore Size (mm)	Port Size		Stroke(mm) *1					
	AQ/ADQ	UAQ/UADQ	Double Acting			Single Acting		
	Rc(PT)	UNF/NPT	Single Rod	Double Rod	Non Rotating	Rear Boss Mount	Spring Return	Spring Extended
$\phi$ 12	M5×0.8	10~32 UNF	5, 10, 15 20, 25, 30	N/A	N/A	5, 10, 15 20, 25, 30	N/A	N/A
$\phi$ 16	M5×0.8	10~32 UNF	5, 10, 15, 20, 25 30, 35, 40, 45, 50, 75	5, 10, 15, 20, 25 30, 35, 40, 45, 50	5, 10, 15, 20, 25 30, 35, 40, 45, 50, 75	5, 10, 15, 20, 25 30, 35, 40, 45, 50, 75	5, 10	5, 10
$\phi$ 20	M5×0.8	10~32 UNF					N/A	N/A
$\phi$ 25	M5×0.8	10~32 UNF					N/A	N/A

\*1. Intermediat Stroke : A spacer of 5, 10, 15 and 20 mm is used for intermediate strokes between 55 and 100 mm stroke (for example 55, 60, 65 etc.)  
[ Example : AQB50-55D is produced by installing 20 mm spacer in AQB50-75D ]

\*Note : At 5mm StrokePort Sizes is AQ/ADQ@ M5×0.8 UAQ/UADQ@ 10-32UNF.

## How to Order



### Order Made Option

- XC 8 : Adjustable Stroke Cylinder /  
Extension Adjustable Type
- XC 9 : Adjustable Stroke Cylinder /  
Retraction Adjustable Type
- XC10 : Dual Stroke Cylinder /  
Double Rod Type
- XC11 : Dual Stroke Cylinder /  
Single Rod Type
- X163 : Coil Scraper (Metal scraper)  
Type

### 1 Series

Blank : Metric(PT)  
U : NPT

### 2 Magnet

Blank : Without Magnet  
D : Built-in Magnet

### 3 Model

Blank : Single Rod  
W : Double Rod  
K : Non-Rotating

### 4 Type

B : Through Hole  
(Standard Type)  
A : Both Ends Tapped

### 5 Bore Size

12 :  $\phi$  12mm (1/2inch)  
16 :  $\phi$  16mm (5/8inch)  
20 :  $\phi$  20mm (3/4inch)  
25 :  $\phi$  25mm (1inch)

### 6 Cylinder Stroke(mm)

∴ Refer to the upside table

### 7 Action

D : Double Acting  
S : Single Acting/Spring Return  
T : Single Acting/Spring Extended

### 8 Body Option

Blank : Standard  
C : Rubber Cushion  
M : Rod End Male Thread  
F : Rear Boss Mount

### 9 Special Option

Blank : Standard Type  
XC16 : Copper-Free

### 10 Applicable Auto Switches

Blank : Without Auto Switch  
W4 : Reed Switch  
(Lead wire of 0.5m)  
W4L : Reed Switch  
(Lead wire of 3m)

### 11 Number of Switches

Blank : 2 pcs.  
S : 1 pc.  
# : Enter Required Number  
of Switches.

### 12 Long Stroke Swifx Symbol for Long Stroke

Bore Size	Long Stroke	Symbol
20	51st~	TC 180
25		TC 335

## Standard/Specifications

Fluid	Air
Max. Operating Pressure	9.9kgf/cm <sup>2</sup> (140 psi)
Ambient and Fluid Temperature	-10~70℃ (15~160 ° F)
Lubrication	Not Required
Cushion	None
Rod End Thread	Female (Standard Type)
Stroke Tolerance	+1.0 0 mm (0.039 inch)
Mounting	Through Hole (Standard)
Piston Speed	50~500 mm/sec (2~20 inch/sec)

## Body Option/Available

● - Standard ○ - Optional

Type	Action	Code	Single Rod						Double Rod				
			Blank	M	C	CM	F	FC	FCM	Blank	M	C	CM
Standard Type	Double Acting	$\phi$ 12~ $\phi$ 20	●	●	●	○	●	●	●	○	●	●	●
		$\phi$ 25	●	●	●	●	●	●	●	●	●	●	●
Standard Type	Single Acting	Spring return	●	●	N/A	N/A	●	N/A	N/A	N/A	N/A	N/A	N/A
		Spring extended	●	●	N/A	N/A	●	N/A	N/A	N/A	N/A	N/A	N/A
With Auto Switch	Double Acting	$\phi$ 12	●	●	●	○	●	●	○	●	●	○	○
		$\phi$ 10~ $\phi$ 25	●	●	●	○	●	●	○	●	●	○	○

Note : Single Acting(Spring return / Spring extended) is optional.

C : Rubber Cushion, M : Rod End Male Thread, F : Rear Boss Mount

ACP/  
UACP

APM

AS

AX

AM

AM2

AL/  
ALX

AQ/  
UAQ

ADQCP

AQ2/  
UADQ2

AG/  
UAG

NGQ/  
UNGQ

AJ/  
AJM

ABK

NSK

GX/  
AGX

NDM

ADR

AMR/  
UAMR

NST

AST

ASTH

NF

NLCD

NLCS

TCRL

NP

ARD/  
UARD

NR

ASL

SB

SAH

CR/  
CV

CR/  
CV-AQ2,ADQ2

CR/  
CV-AX

CR/  
CV-NLCD

CR/  
CV-AGL

DR100

RS

DV1000/  
3000/4000

DS300  
DS2000