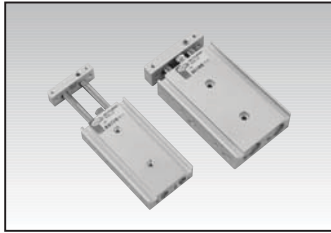




## Double Rod Cylinder Series ADR

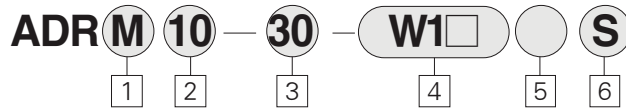
**Bore Size:**  $\phi$  10,  $\phi$  16,  $\phi$  20,  $\phi$  25



- High lateral load capability
- Adjustable stroke is available
- Auto switch ready
- Non-lube service standard.

Action	Series	Bore Size (mm)	Port Size	Standard Stroke (mm)	Description	Operating Pressure kgf/cm <sup>2</sup> (psi)
Double Acting/Single Rod-Ball Bushing Bearing Type 	ADRL	$\phi$ 10	M5×0.8	10, 15, 20, 25, 30, 35, 40, 45, 50, 55, 60, 65, 70, 75	Built-in Magnet Bumper Cushion	1~7.0(14~100)
		$\phi$ 16		10, 15, 20, 25, 30, 35, 40, 45, 50, 55, 60, 65, 70, 75, 80, 85, 90, 95, 100		
		$\phi$ 20				
		$\phi$ 25				
Double Acting/Single Rod-Sliding Bearing Type 	ADRM	$\phi$ 10	M5×0.8	10, 15, 20, 25, 30, 35, 40, 45, 50, 55, 60, 65, 70, 75	Built-in Magnet Bumper Cushion	1~7.0(14~100)
		$\phi$ 16		10, 15, 20, 25, 30, 35, 40, 45, 50, 55, 60, 65, 70, 75, 80, 85, 90, 95, 100		
		$\phi$ 20				
		$\phi$ 25				

### How to Order



#### 1 Type of Bearing

- M : Slide Bearing Type  
L : Ball Bushing Bearing Type

#### 2 Bore Size

- 10 :  $\phi$  10mm  
16 :  $\phi$  16mm  
20 :  $\phi$  20mm  
25 :  $\phi$  25mm

#### 3 Stroke(mm)

- ※ Refer to the upside table  
(For non standard stroke, inquire separately)

#### 4 Types of Auto Switches

- Blank : Without Auto Switch  
W1H : Solid State Switch (DC24V)  
W13 : Reed Switch (AC110V, DC24V)

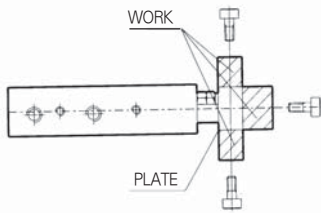
#### 5 Lead Wire Length

- Blank : 0.5m  
L : 3m

#### 6 Number of Switches

- Blank : 2 pcs.  
S : 1 pc.  
# : Enter Required Number of Switches.

Plate Can be Mounted From Three Faces



### Standard Specifications

Action	Double Acting Double Rod
Fluid	Air
Max. Operating Pressure	10 kgf/cm <sup>2</sup> (142 psi)
Proof Pressure	7 kgf/cm <sup>2</sup> (100 psi)
Min. Operating Pressure	1 kgf/cm <sup>2</sup> (14 psi)
Ambient and Fluid Temperature	-10℃~+60℃ (14~140 °F)
Piston Speed	30~300 mm/s
Cushion	Rubber Cushion
Lube	None(Non-Lube)
Stroke Adjustment Range	0~5mm
Bearing	Slide bearing, Ball Bushing Bearing (Same Dimensions)

ACP/  
UACP

APM

AS

AX

AM

AM2

AL/  
ALX

AQ/  
UAQ

ADQCP

AQ2/  
UADQ2

AG/  
UAG

NGQ/  
UNGQ

AJ/  
AJM

ABK

NSK

GX/  
AGX

NDM

**ADR**

AMR/  
UAMR

NST

AST

ASTH

NF

NLCD

NLCS

TCRL

NP

ARD/  
UARD

NR

ASL

SB

SAH

CR/  
CV

CR/  
CV-AQ2,ADQ2

CR/  
CV-AX

CR/  
CV-NLCD

CR/  
CV-AGL

DR100

RS

DV1000/  
3000/4000

DS300

DS2000