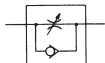


Speed Controllers Series SPM



- Minimizes installation time and cost
- Body swivels 360°
- Speed can be accurately controlled even at low speeds
- Constant speed is easily set

<Symbol>



How to Order

SPM 1 – 2 0

1
2
3
4

① Speed controller (Threaded Elbow Type)

② Port size

- 1 : R(c)1/8
- 2 : R(c)1/4
- 3 : R(c)3/8
- 4 : R(c)1/2

③ Type

- 2 : Direct connection type

④ Controlled method

- 0 : Meter-Out
- 1 : Meter-In

Standard Specifications

| Model | | SPM12□ | SPM22□ | SPM32□ | SPM42□ |
|-------------------------------|----------|-------------------|---------|---------|---------|
| Port size | Cylinder | R(c)1/8 | R(c)1/4 | R(c)3/8 | R(c)1/2 |
| | Tube | R(c)1/8 | R(c)1/4 | R(c)3/8 | R(c)1/2 |
| Proof pressure | | 1.05MPa(149.3psi) | | | |
| Max. operating pressure | | 0.7MPa(99.5psi) | | | |
| Min. operating pressure | | 0.1MPa(14.2psi) | | | |
| Ambient and fluid temperature | | 5~60°C(41~140°F) | | | |
| Number of needle rotations | | 8 turns | | | |
| Weight(g) | | 36 | 74 | 141 | 238 |