

PPH/PPU Series

Piggyback Coalescing Filter/Regulator 1/4", 3/8" and 1/2"

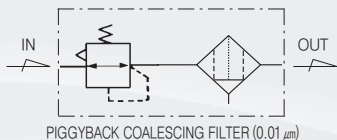


Standard Specifications

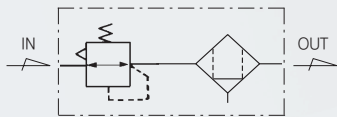
Series	PPH/PPU3	PPH/PPU4
Max. operating pressure (MPa)	1 (140psi)	
Proof pressure (MPa)	1.5 (200psi)	
Set pressure range (MPa)	0.05 ~ 1.0 (7~140psi)	
Set pressure range (MPa)	Standard	0.05 ~ 1.0 (7~140psi)
	Made to order specifications	0.05~1.2 (7~170psi) 0.05~1.5 (7~200psi)
Ambient and fluid temperature (°C)	-5 ~ 60 (23~140°F) (Non-freezing)	
Flow capacity (Nℓ/min) ※	1/4" and 3/8" -300 (11scfm)	3/8" and 1/2" -800 (28scfm)
Filtration (μm)	PPH : 0.3, PPU : 0.01	
Construction	Relieving style	
Bowl material	Polycarbonate	
Bowl guard material	Nylon	
Drain capacity (cm ³)	Manual	38 (1.28oz)
Drain capacity (cm ³)	Auto	30 (1.01oz)
Weight (kg)	0.49 (1.08lb)	0.74 (1.63lb)

※ Test conditions : Supply pressure 0.7Mpa(100psi), Set pressure 0.6Mpa(90psi)

Symbol



PIGGYBACK COALESCING FILTER (0.01 μm)



PIGGYBACK COALESCING FILTER (0.03 μm)

Piggyback Coalescing Filter/Regulator

How to order

PPH 4 — * 04 B D G — *

Piggyback Coalescing Filter

PPH	Filter (Filtration 0.3μm)
PPU	Filter (Filtration 0.01μm)

Series

3	PC3 Series
4	PC4 Series

Thread

Blank	Rc(PT)
N	NPT
G	G(PF)

Port size

02	1/4	PC3 Series
03	3/8	PC3, 4 Series
04	1/2	PC4 Series

Bracket Options

Blank	None	Note2)
B	Bracket + Panel nut	
B1	Panel nut	

Note2) Separately packed, Not assembled.

Other Options

Blank	Set at 0 to 1.0 MPa(140psi)
12	Set at 0 to 1.2 MPa(170psi), F3 Series
15	Set at 0 to 1.5 MPa(200psi), F4 Series
E	Non-relieving type
R	Flow direction : Right → Left
T	Tamper Resistant Kit
XC16	Copper-free

Note1,2)

Note1) Refer to page 85 for Tamper resistant kit.
* If ordering more than one option, indicate symbols numerically then alphabetically Ex) 12RT
* Over Max. pressure value can be set.

Pressure Gauge

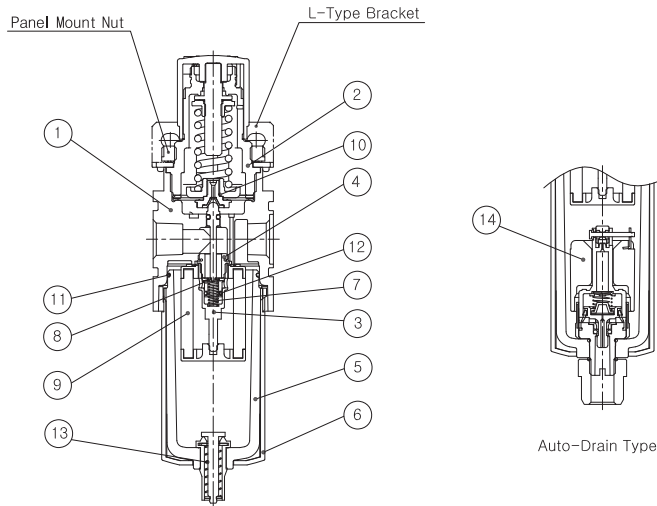
Symbol	Description	Pressure range
Blank	None	
G	Integral pressure gauge (W/Limit Indicator)	1.0MPa(140psi)
P	Pressure gauge	1.0MPa(140psi)
P2	Pressure gauge	0.2MPa(30psi)
P4	Pressure gauge	0.4MPa(60psi)

Drain Options

Blank	Manual Push Drain	Note3)
D	Auto Drain (N.O Type)	

Note3) Min. operating pressure is 0.15MPa (20psi) for Auto Drain (N.O Type)

■ PPH3/PPU3 Construction



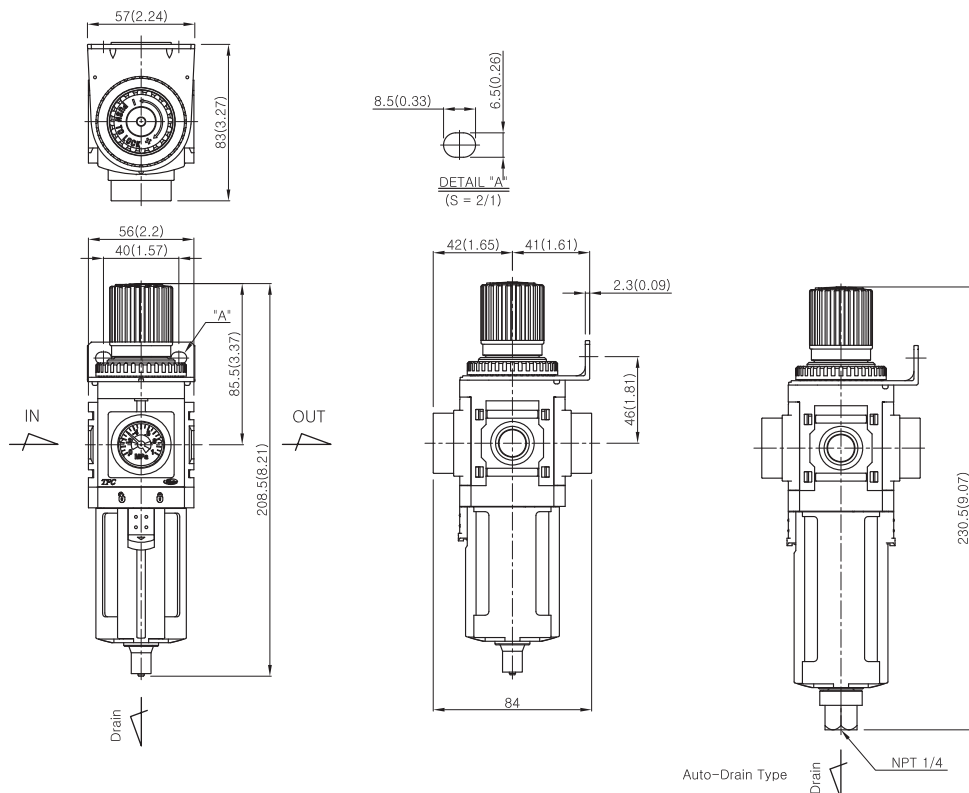
Main Parts / Parts List

No.	Description	Material	Remarks
①	Body	Aluminum	
②	Bonnet	Nylon	
③	Valve guide	Aluminum	
④	Insert	Aluminum	
⑤	Bowl	Polycarbonate	
⑥	Bowl guard	Nylon	
⑦	Valve Spring	Stainless steel	

Replacement Parts / Parts List

No.	Description	Material	Part No.
⑧	Valve ass'y	Brass+NBR	PPH3-08A001-01
⑨	Coalescing filter ass'y	-	PFH3000-005A-6081
⑩	Diaphragm ass'y	Nylon+NBR	PR3-11A001-01
⑪	Bowl O-ring	NBR	PL3-04-001-01
⑫	Valve O-ring	NBR	S6-01
⑬	Drain ass'y	-	TAF3000-10A-6004
⑭	Auto-drain ass'y	-	TAF3000-01A-6008

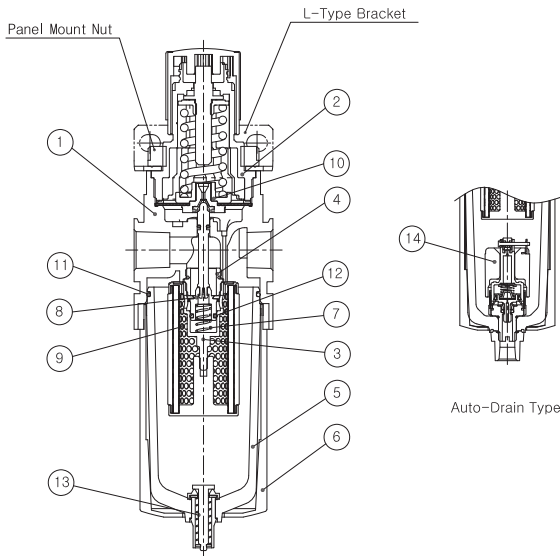
■ PPH3/PPU3 Dimensions



PPH/PPU Series

Piggyback Coalescing Filter/Regulator 1/4", 3/8" and 1/2"

PPH4/PPU4 Construction



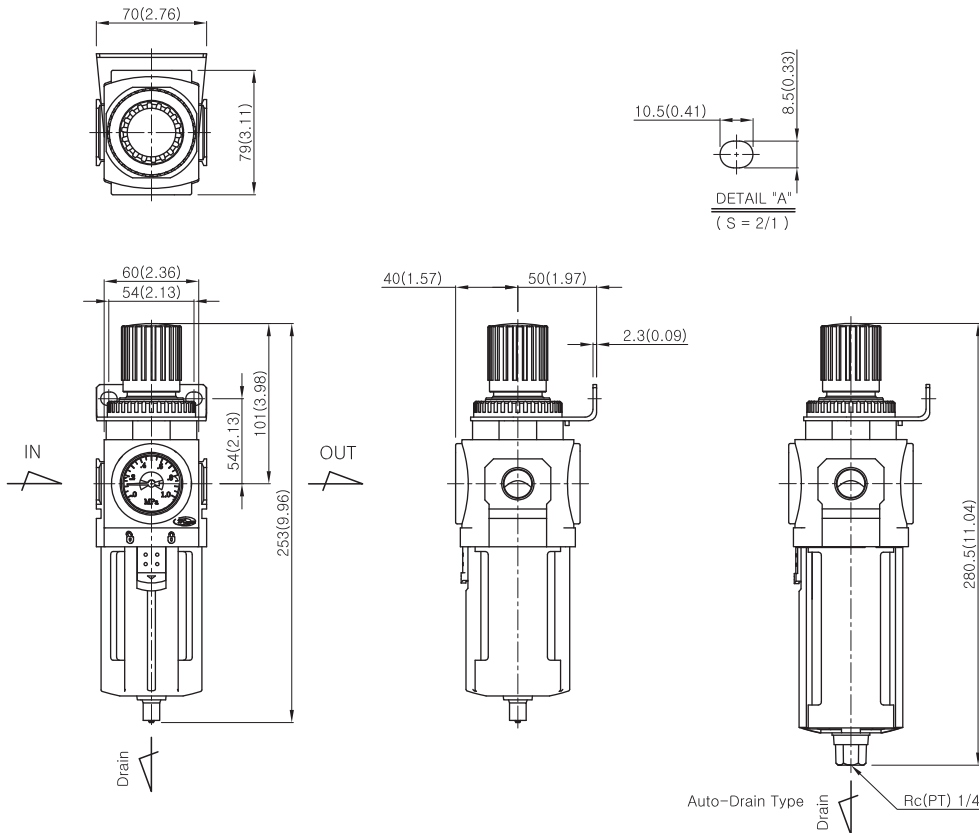
Main Parts / Parts List

No.	Description	Material	Remarks
①	Body	Aluminum	
②	Bonnet	Nylon	
③	Valve guide	Aluminum	
④	Insert	Aluminum	
⑤	Bowl	Polycarbonate	
⑥	Bowl guard	Nylon	
⑦	Valve Spring	Stainless steel	

Replacement Parts / Parts List

No.	Description	Material	Part No.
⑧	Valve ass'y	Nylon+NBR	PP3-08A001-01
⑨	Coalescing filter ass'y	-	PPH4-24A030-01
⑩	Diaphragm ass'y	Nylon+NBR	PR4-11A001-01
⑪	Bowl O-ring	NBR	TAF4000-08-6000
⑫	Valve O-ring	NBR	P10-01
⑬	Drain ass'y	-	TAF3000-10A-6004
⑭	Auto-drain ass'y	-	TAF3000-01A-6008

PPH4/PPU4 Dimensions



■ Flow Characteristics

