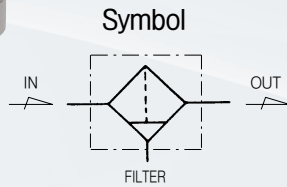


# PF5 Series

## Air Filter 3/4" and 1"



### Standard Specifications

Fluid	Air	
Max. operating pressure (MPa)	1.0(140psi)	
Proof pressure (MPa)	1.5(200psi)	
Ambient and fluid temperature (°C)	-5 ~ 60(23~140°F) (Non-freezing)	
Flow rate ※ (Nℓ /min)	3/4"	8,200(290scfm)
	1"	9,600(339scfm)
Bowl material	Polycarbonate	
Bowl guard material	Nylon	
Filtration (μm)	5	
Drain capacity (cm <sup>3</sup> )	Manual drain : 156(5.27oz)	
	Auto drain : 174(5.88oz)	
Weight (kg)	1.10(2.43lb)	

※ Test conditions : Supply pressure 0.6MPa(90psi), Pressure drop 0.07MPa(10psi)

### How to order

**PF 5** — **\*** **10** **B D** — **\***

Series (Filter Units) — PF 5

Thread — \*

Blank	Rc(PT)
N	NPT
G	G(PF)

Port size — 10

06	3/4
10	1

Other Options

Blank	Filter element - 5μm	L	Life Indicator
J2	Filter element - 20μm	R	Flow direction : Right → Left
J4	Filter element - 40μm	XC16	Copper-free

\* When specifying more than one symbol, indicate them alphabetically Ex) J2R

Drain Options

Blank	Manual Push Drain
D	Auto Drain (N,O Type)

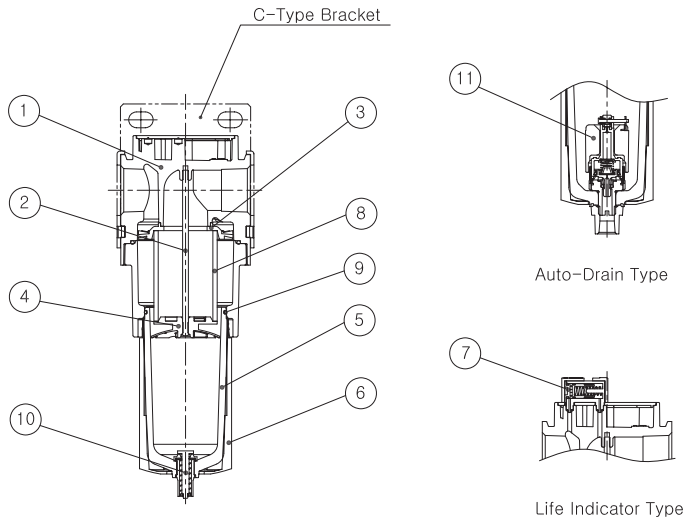
Note1) Min. operating pressure for Auto drain (N,O Type) : 0.15MPa(20psi)

Bracket Options

Blank	None
B	Bracket

Note2) Separately packed, Not assembled.

## Construction



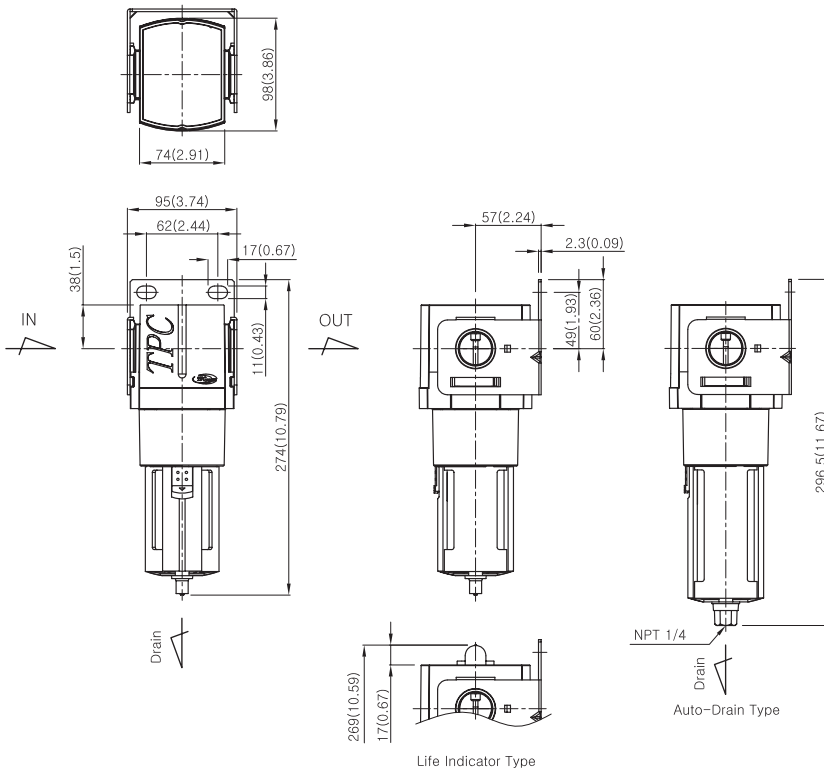
## Main Parts / Parts List

No.	Description	Material	Remarks
①	Body	Aluminum	
②	Baffle screw	Rolled steel	
③	Deflector	Nylon	
④	Baffle	Acetal	
⑤	Bowl	Polycarbonate	
⑥	Bowl guard	Nylon	
⑦	Life indicator	-	Option

## Replacement Parts / Parts List

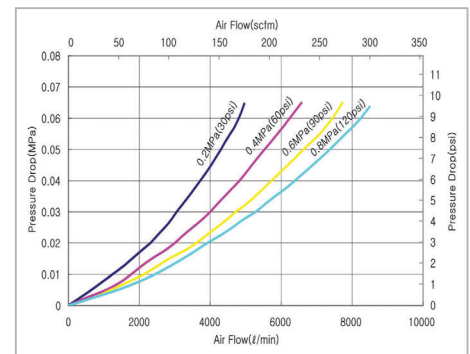
No.	Description	Material	Part No.
⑧	Filter element	Polyethylene	PF5-24-005-01
⑨	Bowl O-ring	NBR	TAF4000-08-6000
⑩	Drain ass'y	-	TAF3000-10A-6004
⑪	Auto drain ass'y	-	TAF3000-04A-6008

## Dimensions



## Flow Characteristics

### ▶ 3/4" PF5



### ▶ 1" PF5

