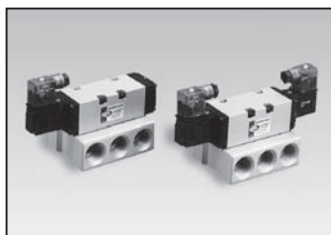


5 Port Solenoid Valve Series DS6000

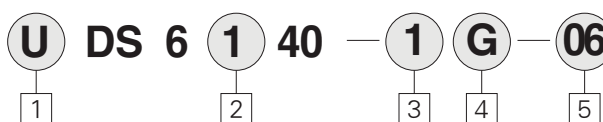


- Compact size and light weight
- Large flow capacity/effective orifice Cv 5.0,
- Low power consumption-1.8w (DC)
- Many variations available
- Compact size and large flow capacity
- Effective orifice 90mm²
- Low power consumption

Body Ported Type	Model	Port Size		Position	Solenoid	Effective Orifice mm ² (Cv)	Pressure kgf/cm ² (psi)
		DS	UDS				
5 Port	DS6140	Rc(PT) 3/4	NPT 3/4	2	Single	90(5.0)	1.5~9.9(21~128 psi)
	Double				1~9.9(14~128 psi)		
	3			Closed Center	70(3.89)	1.5~9.9(21~128 psi)	
				Exhaust Center			
				Pressure Center			

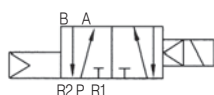
■ Standard Coil Volatage - 110, 220, 120, 240VAC (50/60Hz), 24VDC

How to Order

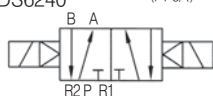


< Symbol >

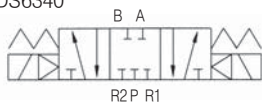
Single
DS6140 (PT 3/4)



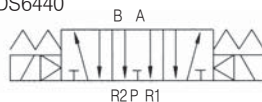
Double
DS6240 (PT 3/4)



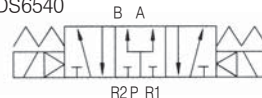
Closed Center
DS6340



Exhaust Center
DS6440



Pressure Center
DS6540



1 Series

Blank : Metric Rc(PT)
U : NPT

2 Type of Actuation

- 1 : 2 Position Single
- 2 : 2 Position Double
- 3 : 3 Position Closed Center
- 4 : 3 Position Exhaust Center
- 5 : 3 Position Pressure Center

3 Voltage

- 1 : AC 110V, 50/60Hz
- 2 : AC 220V, 50/60Hz
- 5 : DC 24V
- 6 : DC 12V

4 Electrical Entry/ Indicator Light and Surge Suppression

G : Grommet

D : DIN Terminal(standard)
DN : DIN Terminal(with lamp)
DZ : DIN Connector(With indicator Light and surge suppressor)

5 Port Size

06 : 3/4

Specifications

Model	(U)DS6140	(U)DS6240	(U)DS6340	(U)DS6440	(U)DS6540
Fluid	Air				
Operating Pressure Range(kgf/cm ²)	1.5~9.9	1~9.9	1.5~9.9(21~140psi)		
Effective Orifice mm ² (Cv)	90(5.0)		70(3.89)		
Ambient and Fluid Temperature	Max. 50℃ (122 °F)				
Response Time(5kgf/cm ²)	40ms or less		60ms or less		
Max. Operating frequency	5Hz		3Hz		
Lubrication	Not required				
Manual Override	Non-locking Push Type				
Impact/Vibration Resistance	30G/5G(8.3~2000HZ)				
Enclosure	Dust Proof				
Coil Voltage	AC 50/60HZ 110V, 120V, 220V, 240V, DC12V, 24V				
Allowable Voltage	-15%~+10% of Rated Voltage				
Coil Insulation	Class B or equivalent(130℃)(266° F)				
Power Consumption	AC	Inrush	5.6VA(50HZ), 5.0VA(60HZ)		
		Holding	4.5VA(50HZ), 3.8VA(60HZ)		
	DC	1.8W/2W(With LED)			
Weight(kgf)	1.17	1.20	1.22	1.22	1.22
Surge Suppressor Circuit	AC, DC : Varistor				
Indicator Light	LED				

- DS3000
- DS5000
- DP300/3000/5000
- DS6000
- DS3000 (Base Ported)
- DX1,2
- DX2R
- DH
- DW
- DM
- DT220/UDT220/DC
- TPC-1000/1200
- PC
- PF
- PR
- PL
- PP
- PFFH/PFU
- PLV
- TXF
- PVR/PNR
- PER2000/3000
- TAD
- EP
- EM/EL
- SPSA
- SPS
- SQ
- SC
- SP
- SP4000/SPM
- SP2000
- SN
- SQ2
- SH
- DCH
- SF
- ST
- W1
- W2/W3
- W4/W5
- W6/W7 Mini Auto Switch