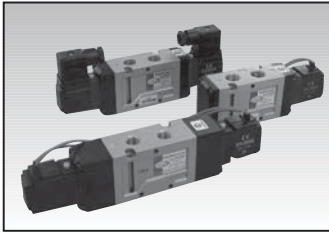


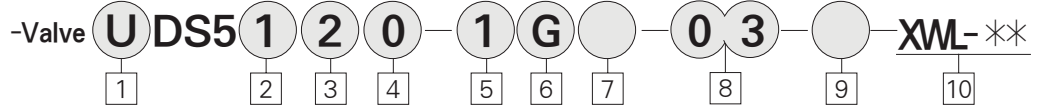
### 5 Port Solenoid Valve Series DS5000



- Compact size and light weight
- Large flow capacity
- Low power consumption
- Designed for non-lubricated service

Body Ported Type	Model	Port Size		Position	Solenoid	Effective Orifice mm <sup>2</sup> (Cv)		Pressure kgf/cm <sup>2</sup> (psi)
		DS	UDS			3/8	1/2	
5 Port	DS5120	RC(PT)	NPT	2	Single	50(2.8)	58(3.2)	1.5~9(21~128)
	Double				50(2.8)	58(3.2)	1~9(14~128)	
	DS5320	1/2	1/2	3	Closed Center	40(2.2)	45(2.5)	1.5~9(21~128)
	DS5420				Exhaust Center	43(2.4)	48(2.7)	1.5~9(21~128)

### How to Order



**1** DS5000 Series

Blank : Metric Rc(PT)  
 U : NPT

**2** Type of Actuation

- 1 : 2 Position/Single Solenoid
- 2 : 2 Position/Double Solenoid
- 3 : 3 Position/Closed Center
- 4 : 3 Position/Exhaust Center
- 5 : 3 Position/Pressure Center

**3** Body Type

2 : For 20 Type Manifold Body Ported

**4** Body Option

- 0 : Standard
- 3 : Common Exhaust for Main and Pilot Valve

**5** Voltage

1 : AC110V, 50/60Hz

- 2 : AC220V, 50/60Hz
- 3 : AC120V, 50/60Hz
- 4 : AC240V, 50/60Hz
- 5 : DC24V
- 6 : DC12V
- 7 : DC6V
- 8 : AC24V, 50/60Hz, Others
- 9 : DC100V

**6** Electronic Entry/Indicator Light and Surge Suppressor

- G : Grommet (Lead Wire Length 300mm)
- DZ : DIN Connector with Indicator Light and Surge Suppressor
- N : W/D DIN Connector

**7** Manual Override

Blank : Non-Locking PushType

C : Knob Locking Type

**8** Port Size (Sup., Cyl.)

- 02 : RC(PT) 1/4
- 03 : 3/8
- 04 : 1/2 (Exhaust Port: 3/8)

**9** Special Option

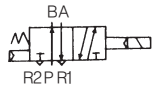
Blank : Standard Type  
 XC16 : Copper-Free

**10** Length of lead wire

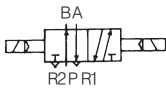
- Blank : 300mm (Standard)
- XWL01 : 100mm
- XWL02 : 200mm
- ...
- XWL20 : 2000mm
- ∴ Other length : Contact us

< Symbol >

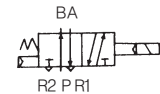
Single DS5120



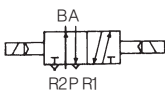
Double DS5220



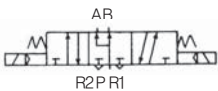
Closed Center DS5320



Exhaust Center DS5420



Pressure Center DS5520



**1** Series for DS5000 series

Blank : Metric Rc(PT)  
 U : NPT  
 P(SUP) 1/2  
 R1, R2(EXH) 3/8

**2** Stations

- 02 : 2 stations
- ...
- 10 : 10 stations

- Pilot Valve Assembly Only **SC2** -



**1** Voltage

- 1 : AC110V, 50/60Hz
- 2 : AC220V, 50/60Hz
- 3 : AC120V, 50/60Hz
- 4 : AC240V, 50/50Hz
- 5 : DC24V
- 6 : DC12V
- 7 : DC6V
- 8 : AC24V, 50/50Hz, others
- 9 : DC100V

**2** Electrical Entry/Indicator Light and Surge Suppressor

- G : Grommet (Lead wire length 300mm)
- DZ : DIN Connector With Indicator Light and Surge Suppressor

**3** Manual Override

Blank : Non-locking Push Type  
 C : Knob locking Type

**4** Special Option

Blank : Standard Type  
 XC16 : Copper-Free

**5** Length of lead wire

- Blank : 300mm (Standard)
- XWL01 : 100mm
- XWL02 : 200mm
- ...
- XWL20 : 2000mm
- ∴ Other length : Contact us

DS3000
DS5000
DP300/ 3000/5000
DS6000
DS3000 (Base Ported)
DX1,2
DX2R
DH
DW
DM
DT220/ UD1220/DC
TPC-1000 /1200
PC
PF
PR
PL
PP
PFH/ PFU
PLV
TXF
PVR/PNR
PER2000 /3000
TAD
EP
EM/EL
SPSA
SPS
SQ
SC
SP
SP4000 /SPM
SP2000
SN
SQ2
SH
DCH
SF
ST
W1
W2/W3
W4/W5
W6/W7 Mini Auto Switch

## Specifications

Fluid		Air
Operating Pressure Range	2 Position Single · 3Position	1.5~9 kgf/cm <sup>2</sup> (21~128 psi)
	2 Position Double	1~9 kgf/cm <sup>2</sup> (14~128 psi)
Ambient and Fluid Temperature		Max. 50°C(122°F)
Response Time	2 Position Single/Double	40 ms or Less {5kgf/cm <sup>2</sup> (71 psi)}
	3Position	50 ms or Less {5kgf/cm <sup>2</sup> (71 psi)}
Max. Operating Frequency	2 Position Single/Double	5 c/s
	3 Position	3 c/s
Lubrication		Not Required※
Manual Override		Non-Locking Push Type, Knob Locking Type
Mounting Position		Free
Impact/Vibration Resistance		30G/5G(8.3~200Hz)
Enclosure		Dust Proof

※ If provided, use Turbine 1Class(ISO VG #32)

Electical Entry		Grommet, DIN Connector	
Coil Voltages	AC 50/60Hz	100V, 200V, 120V, 240V, 24V	
	DC	6V, 12V, 24V	
Allowable Voltage		-15 ~ +10% of Rated Voltage	
Power Consumption	AC	Starting	5.6VA(50Hz), 5.0VA(60Hz)
		Holding	3.4VA(50Hz), 2.3VA(60Hz)
		DC	1.8W/2W(With LED)
Indicator Light/Surge		AC	LED, Varistor
Suppressor Circuit		DC	LED, Varistor

## Model for Manifold

Model	Type	Exhaust	A,B(CYL) Port
DS5○20-○○ <sup>03</sup> <sub>04</sub>	B Mount	20	Common Valve

## Manifold Specifications

Manifold Type	B Mount
Exhaust	Common Exhaust
Maximum Stations	10 Stations

Manifold Type	Model	Exhaust Port	Piping/Port Location			Port Size			Applicable Valve
			P	R	A,B	P	R	A,B	
B Mount	DSM5-20 UDSM5-20	Common	Side/	Side/	Top	3/8	3/8	3/8	DS5○20 UDS5○20
			Base	Base	Valve	1/2		1/2	