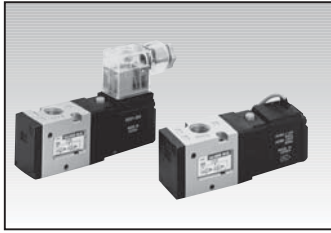
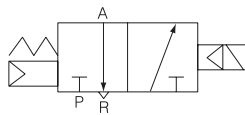


## 3 Port Solenoid Valve Series DS300

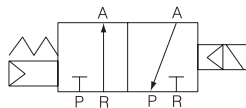


- Compact size and light weight
- Large flow capacity/Cv0.9
- Low power consumption/1.8WDC
- Designed for non-lubricated service
- Easy modification of N · C to N · O

< Symbol >



DS 301 Normally Closed



DS 301 Normally Open

Body Ported Type	Model	Port Size	Position	Solenoid	Effective Orifice mm <sup>2</sup> (Cv)	Pressure kgf/cm <sup>2</sup> (psi)
3 Port	DS301	Rc(PT)1/8, 1/4	2	Single	1/8:19.2(1.07)	1.5~9(21~128)
	UDS301	NPT1/8, 1/4			1/4:22(1.2)	

※ AType : Normally Closed, BType : Normally Open

### How to Order

- Valve **U** **DS3** **0** **1** - **1** **G** **C** - **02** **A** - **XWL** \*\*

**1** Series

Blank : Metric Rc(PT)  
U : NPT

**2** Type of Actuation

0 : Normal Closed/Normal Open

**3** Body Option

1 : Body Ported Type

**4** Voltage

1 : AC110V, 50/60Hz  
2 : AC220V, 50/60Hz  
3 : AC120V, 50/60Hz  
4 : AC240V, 50/60Hz  
5 : DC24V  
6 : DC12V  
7 : DC6V  
8 : Other(ex AC24V)  
9 : DC100V

**5** Electronic Entry/Indicator

Light and Surge Suppressor  
G : Grommet  
(Lead wire length 300mm)  
DZ : With Indicator light and  
Surge Suppressor  
N : W/D DIN connector

**6** Manual Override

Blank : Non-locking PushType  
C : Knob locking Type

**7** Port Size (P, A, R Port)

01 : 1/8  
02 : 1/4(Standard)

**8** Type of Actuation

A : Normally Closed  
B : Normally Open

**9** Special Option

Blank : Standard Type  
XC16 : Copper-Free

**10** Length of lead wire

Blank : 300mm  
(Standard)  
XWL01 : 100mm  
XWL02 : 200mm  
:  
:  
XWL20 : 2000mm  
∴ Other length : Contact us

- Pilot Valve Assembly **SC2** - **1** **G** - **50** - **XWL** \*\*

**1** Voltage

1 : AC100V, 50/60Hz  
2 : AC200V, 50/60Hz  
3 : AC120V, 50/60Hz  
4 : AC240V, 50/60Hz  
5 : DC24V  
6 : DC12V  
7 : DC6V  
8 : Other(ex AC24V)  
9 : DC100V

**2** Electrical Entry/Indicator

Light and Surge Suppressor  
G : Grommet (Lead wire length  
300mm)  
DZ : DIN Connector With Indicator  
light and Surge suppressor  
D : DIN Terminal Type

**3** Manual override

Blank : Non-locking Push type  
C : Knob locking type

**4** Special Option

Blank : Standard type  
XC16 : Copper-free

**5** Length of lead wire

Blank : 300mm(Standard)  
XWL01 : 100mm  
XWL02 : 200mm  
:  
:  
XWL20 : 2000mm  
∴ Other length : Contact us

### Specifications

Models	DS300	
Action	Pilot Type	
Position, Port	2 Position, 3 Port	
Body Options	Body Ported Type	
Fluid	Air	
Port Size Rc(PT)	1/8"	1/4"
Effective Orifice mm <sup>2</sup> (Cv)	19.2 (1.07)	22 (1.2)
Operating Pressure Range	1.5~9kgf/cm <sup>2</sup> (21~128psi)	
Ambient and Fluid Temperature	Max. 50 °C (122 °F)	
Response Time	30ms or Less ( 5kgf/cm <sup>2</sup> (7.1psi))	
Max. Operating Frequency	5c/s	
Lubrication	Not Required	
Manual Override	Non-Lock Push Type, Knob Locking Type	
Mounting Position	Free	
Impact/Vibration Resistance	30 G/5 G (8.3~2000 Hz)	