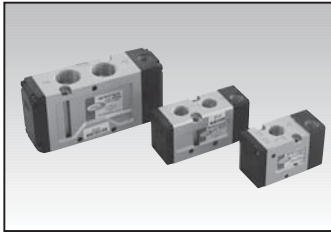


3 · 5 Port Air Pilot Valve Series DP300/3000/5000

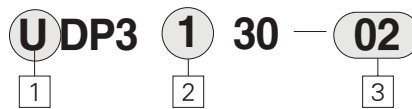


- Compact size and light weight
 - 26.4mm / 0.63inch width (series DP300, DP3000 / UDP300, UDP3000)
 - 32mm / 1.26inch width (series DP5000 / UDP5000)
- Large flow capacity
 - Cv. 1.0 - Rc(PT)1/4 (DP300, DP3000)
 - NPT 1/4(UDP300, UDP3000)
 - Cv. 3.2 - Rc(PT) 1/2(DP5000)
 - NPT 1/2(UDP5000)

Body Ported Type	Model	Port Size		Position	Solenoid	Effective Orificem ² (Cv) RC(P,T)		Ported Pressure kgf/cm ² (psi)
		DS	UDS					
3way	DP301	RC(PT) 1/8, 1/4	NPT 1/8, 1/4	2	Single	1/8:14(0.8)	1/4:18(1.0)	1.5~9(21~128psi)
5way	DP3130	RC(PT) 1/8, 1/4	NPT 1/8, 1/4	2	Single	1/8:14(0.8)	1/4:18(1.0)	1.6~9(21~128psi)
	DP3230				Double	1/8:14(0.8)	1/4:18(1.0)	1.0~9(21~128psi)
	DP5120	RC(PT) 3/8, 1/2	NPT 3/8, 1/2	2	Single	3/8:48(2.8)	1/2:58(3.2)	1.6~9(21~128psi)
	DP5220				Double	3/8:48(2.8)	1/2:56(3.2)	1.2~9(17~128psi)

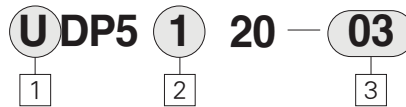
How to Order

DP3000



- 1 Series
Blank : Metric Rc(PT)
U : NPT
- 2 Type of Actuation
1 : Single Pilot type
2 : Double Pilot type
- 3 Port Size(P, A, B)
01 : 1/8
02 : 1/4
* Exhaust Port is only 1/8"

DP5000



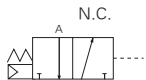
- 1 Series
Blank : Metric Rc(PT)
U : NPT
- 2 Type of actuation
1 : Single Pilot Type
2 : Double Pilot Type
- 3 Port Size(P, A, B)
03 : 3/8
04 : 1/2
(Exhaust Port is only 3/8")

DP301

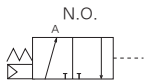


- 1 Series
Blank : Metric Rc(PT)
U : NPT
- 2 Port Size(P, A, B)
01 : 1/8
02 : 1/4
- 3 Type of Actuation
A : Normally Closed
B : Normally Open

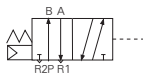
< Symbol >



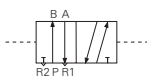
DP 301 Normally Closed



DP 301 Normally Open



(U)DP 3130
(U)DP 5120



DP 3230
DP 5220

Specifications

Fluid		Air	
Operating Pressure Range	2 Position	Single	1.5~9kgf/cm ³ (21~128psi)
		Double	1~9 kgf/cm ³ (14~128psi)
Ambient and Fluid Temperature		MAX. 60°C(140°F)	
Pilot Pressure Range	2 Position	Single	(Note1) 1.7~9kgf/cm ³ (22~128psi)
		Double	1~9kgf/cm ³ (14 ~ 128psi)
Lubrication		Not required	
Impact/Vibration Resistance		30 / 5 (8.3 ~ 2000Hz)	
Mounting Position		Free	

(Note 1) The minimum pressure for Pilot should be higher than "A"
P : Supply pressure. A : (0.5×P+1){0.5×P+0.1}