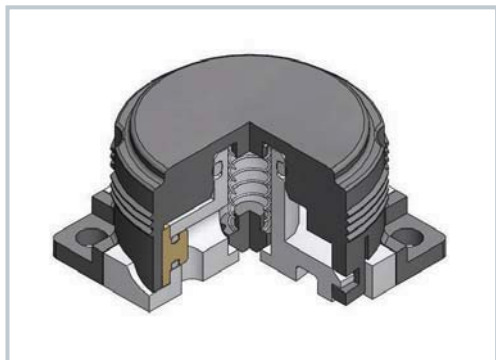


# Option

## Built-in Check Valve, Tamper Resistant Kit

### Built-In Check Valve

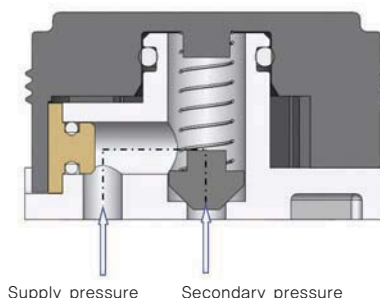


Built-In Check Valve exhausts pressure which is the minimum upstream pressure at which the valve will operate and prevents a counter flow of the fluid.

### Specifications

Fluid	Air
Ambient and fluid temperature (°C)	-5~60(23~140°F) (Non-freezing)
Operating pressure range (MPa)	under 0.15(20psi)
Applicable standard	PC2-5 series

### Construction



### Tamper Resistant Kit



It helps prevent unauthorized adjustment to the pressure setting.

