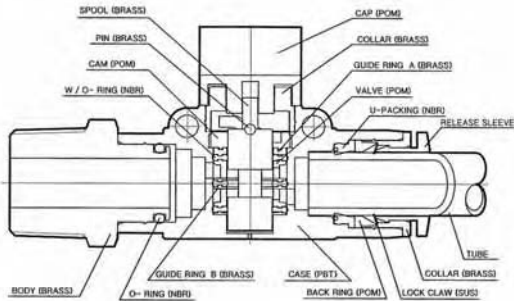




## Hand Valves

### Construction



### Specifications

Applicable fluid Type	AIR (No other type of gas or liquid)	
Working Pressure range	0~150 PSI	0~9.9kgF/cm <sup>2</sup> (0~990KPa)
Negative Pressure	-29.5 in Hg	-750mm Hg (10 Torr)
Working temperature Range	32~140° F	0~60° C

### Product Code Designation

FSV	—	T1/4	—	N1/4
(a)		(b)		(c)

(a) MODEL TYPE

(b) TUBE OUTSIDE DIAMETER (φ O.D.)

	METRIC TUBE				INCH TUBE			
CODE	06	08	10	12	1/4	5/16	3/8	1/2
SIZE	6mm	8mm	10mm	12mm	1/4"	5/16"	3/8"	1/2"

(c) THREAD TYPE & SIZE (T)

• METRIC & R(PT) THREAD

	METRIC THREAD	R(PT) THREAD					
CODE	M5	01	02	03	04	06	
SIZE	M5×0.8	R1/8	R1/4	R3/8	R1/2	R3/4	

• INCH THREAD

	NPT THREAD			
CODE	N1	N2	N3	N4
SIZE	NPT1/8	NPT1/4	NPT3/8	NPT1/2

### FEATURES

- The source of pressure can be completely shut off by simply turning the knob.
- Three-way directional control configuration releases the residual internal pressure on the output side when manually closed.
- Ideal for inspecting or repairing any devices without compromising the safety.
- Directionality of airflow may be selected from the tubing or threaded input side to the tubing or threaded output side.

● Straight A(Hand Valve)



[ØD-T]



THREAD	METRIC TUBE					INCH TUBE					
	04	06	08	10	12	5/32	3/16	1/4	5/16	3/8	1/2
1/8NPT								FSV-T1/4-N1/8	FSV-T5/16-N1/8		
1/4NPT								FSV-T1/4-N1/4	FSV-T5/16-N1/4	FSV-T3/8-N1/4	FSV-T1/2-N1/4
3/8NPT								FSV-T1/4-N3/8	FSV-T5/16-N3/8	FSV-T3/8-N3/8	FSV-T1/2-N3/8
1/2NPT										FSV-T3/8-N1/2	FSV-T1/2-N1/2
1/8PT		FSV06-01	FSV08-01								
1/4PT		FSV06-02	FSV08-02	FSV10-02	FSV12-02						
3/8PT		FSV06-03	FSV08-03	FSV10-03	FSV12-03						
1/2PT				FSV10-04	FSV12-04						

● Straight B(Hand Valve)



[T-ØD]



THREAD	METRIC TUBE					INCH TUBE					
	04	06	08	10	12	5/32	3/16	1/4	5/16	3/8	1/2
1/8NPT								FSV-N1/8-T1/4	FSV-N1/8-T5/16		
1/4NPT								FSV-N1/4-T1/4	FSV-N1/4-T5/16	FSV-N1/4-T3/8	FSV-N1/4-T1/2
3/8NPT								FSV-N3/8-T1/4	FSV-N3/8-T5/16	FSV-N3/8-T3/8	FSV-N3/8-T1/2
1/2NPT										FSV-N1/2-T3/8	FSV-N1/2-T1/2
1/8PT		FSV01-06	FSV01-08								
1/4PT		FSV02-06	FSV02-08	FSV02-10	FSV02-12						
3/8PT		FSV03-06	FSV03-08	FSV03-10	FSV03-12						
1/2PT				FSV04-10	FSV04-12						

● Union straight(Hand Valve)



[ØD1-ØD2]



TUBE	METRIC TUBE					INCH TUBE					
	04	06	08	10	12	5/32	3/16	1/4	5/16	3/8	1/2
1/4								FSV-T1/4-T1/4	FSV-T5/16-T1/4		
5/16									FSV-T5/16-T5/16	FSV-T3/8-T5/16	
3/8										FSV-T3/8-T3/8	FSV-T1/2-T3/8
1/2											FSV-T1/2-T1/2
04											
06		FSV06-00									
08			FSV08-00								
10				FSV10-00							
12					FSV12-00						